

How to update IC-7100 DSTAR Repeater List with DSTAR INFO CSV file

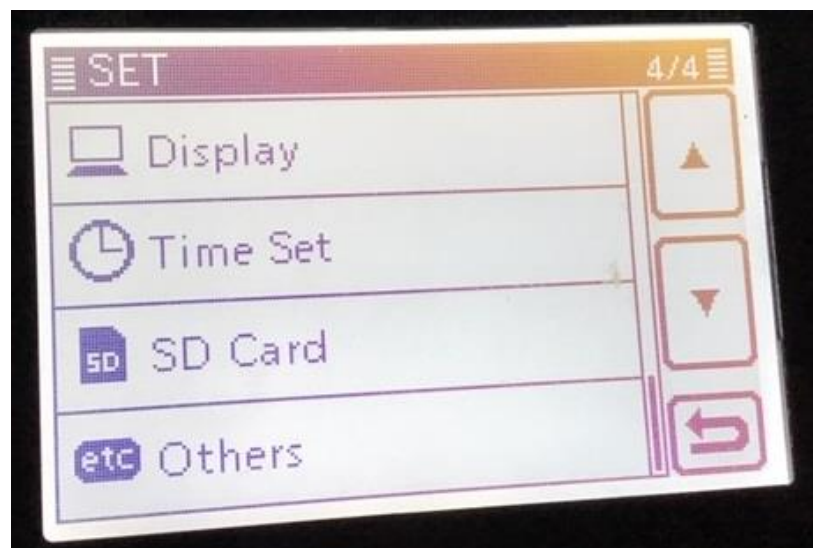
Using SD card method.

1: load SD card with settings

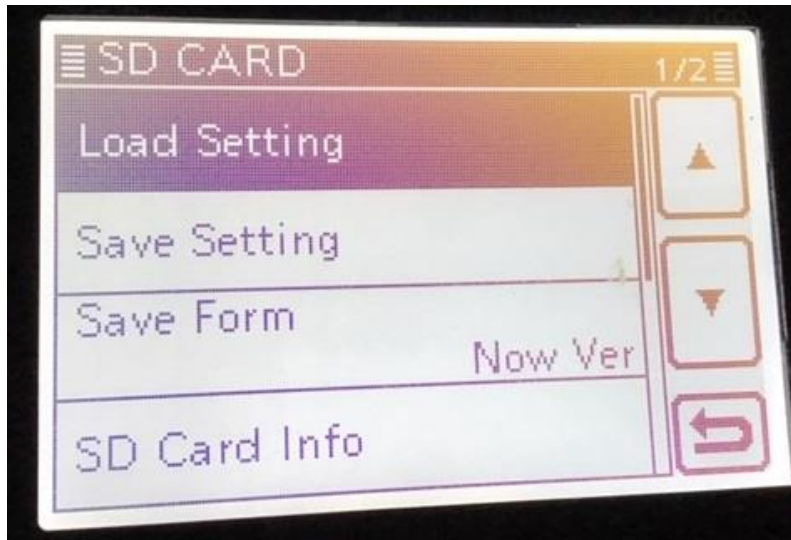
a: insert SD card (need about 5meg of free space or more)

b: t/on Radio

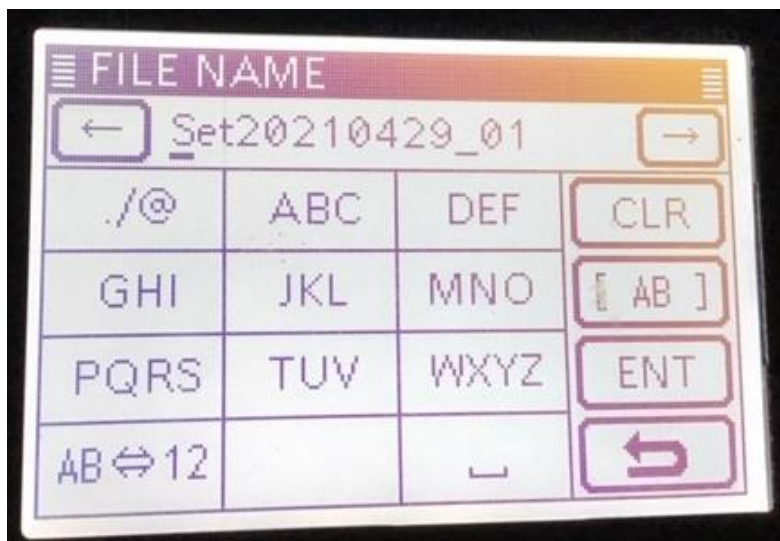
c: Press SET



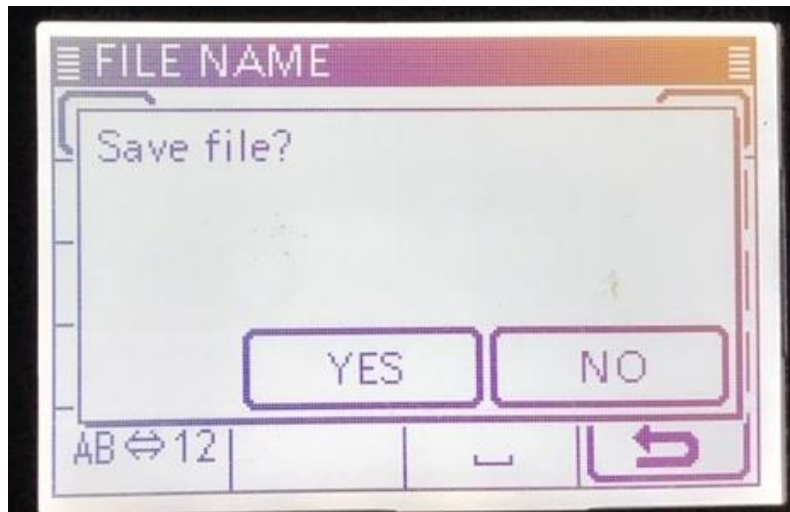
d: scroll using arrows on screen to SD CARD item., touch it



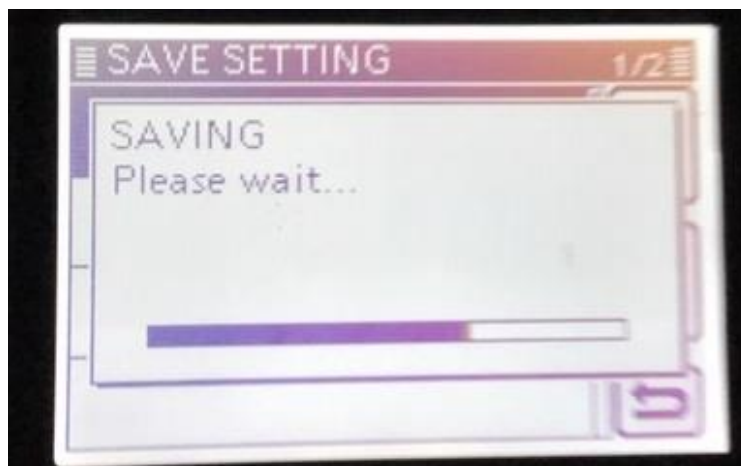
e: Select Save Setting, Give it a name, I use the Date (set210226). The default is a date that works too.



After I hit ENT I get this :

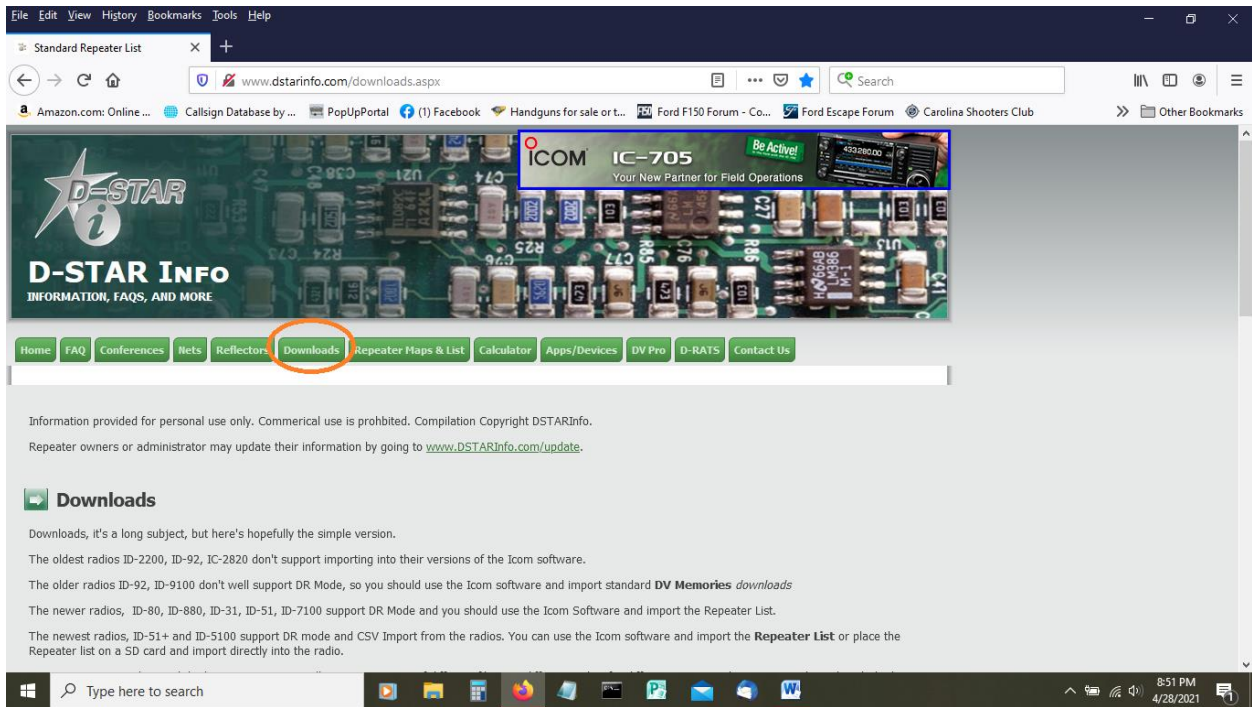


Touch YES

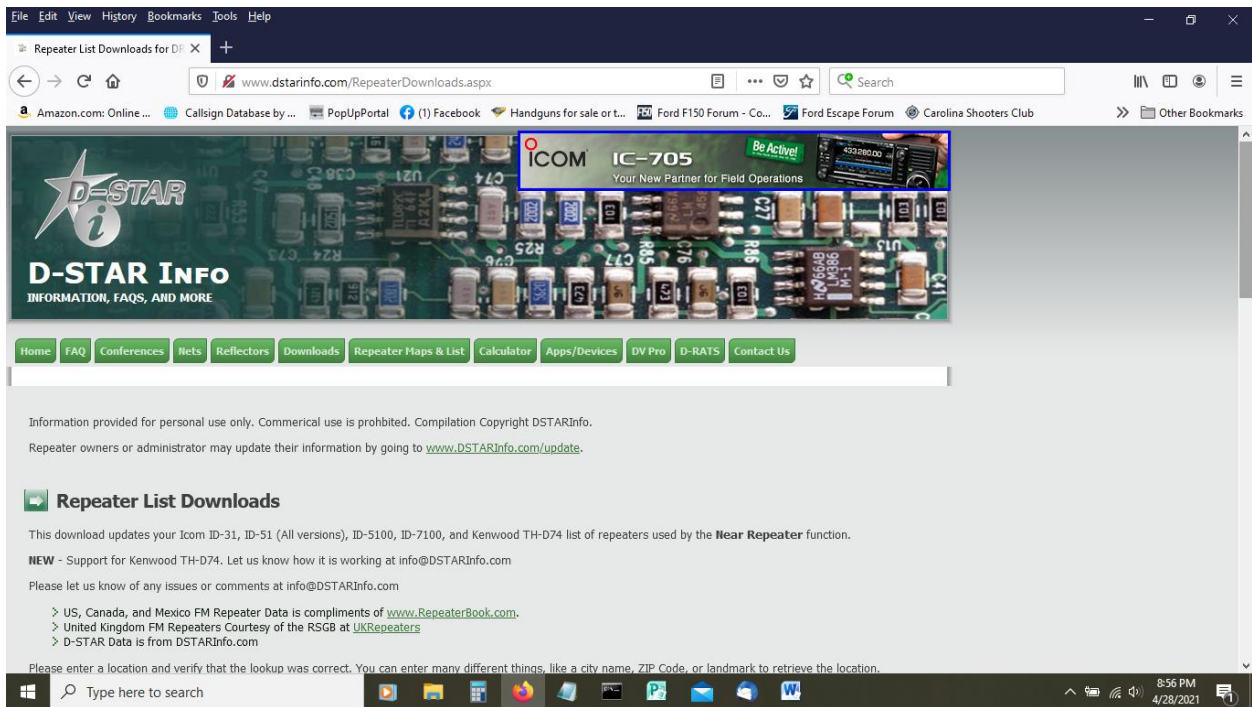


f: Remove the card.

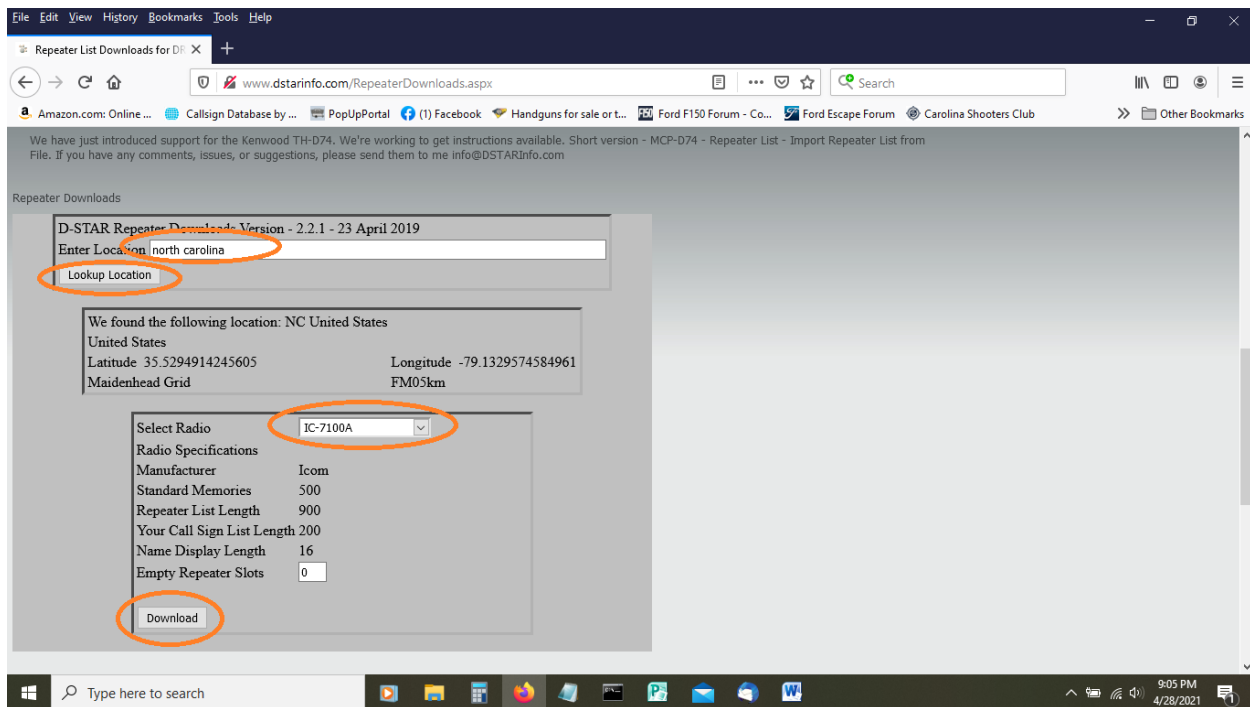
- 2: insert SDcard in adapter and into PC.
- 3: Start CS7100, If first time be sure you select SD card vs COM port.
- 4: Click on File, then OPEN, go to the SD card and find your file.
- 5: Go to DSTARINFO.COM to get your csv file.



Click on DOWNLOADS



Scroll down and enter your location, I used north Carolina and click on Lookup Location.



Now select your radio, I used IC7100A

Click Download then Save File. It is in your Download folder and called IRNAIC7100.csv

This creates a repeater list for ALL North America, hence several groups.

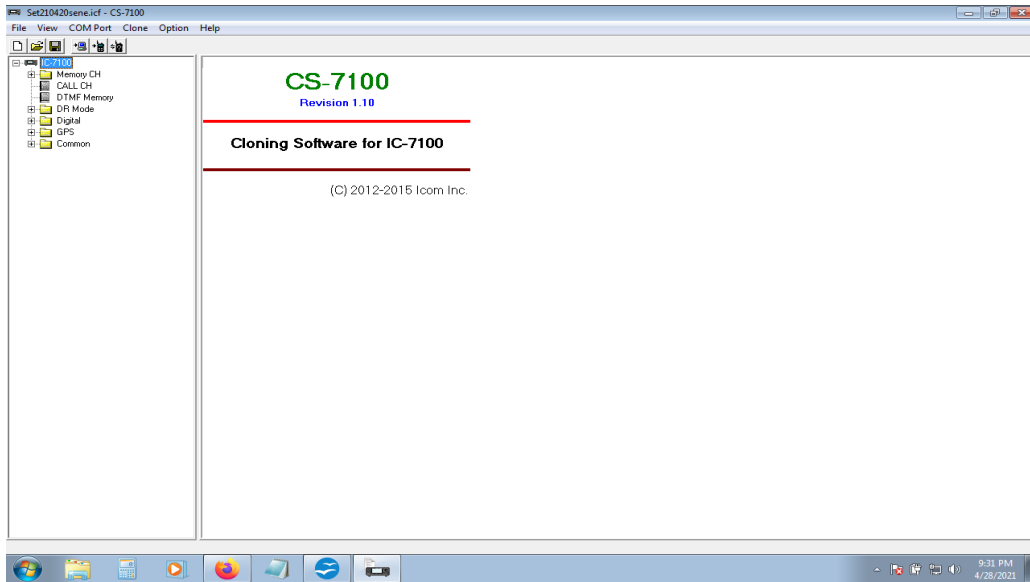
Now you can close your browser

Here is where I created two separate files for Northeast and Southeast Using a spreadsheet program like Excel or the free Office suite OPEN OFFICE.

I opened the downloaded repeater list, deleted all rows up to Northeast and all rows past Southeast and saved that as a new file, e.g. NESSerepeaterlists. Then I created two separate files, one for Northeast and one for Southeast. I called them group21N.csv and group22SE.csv.

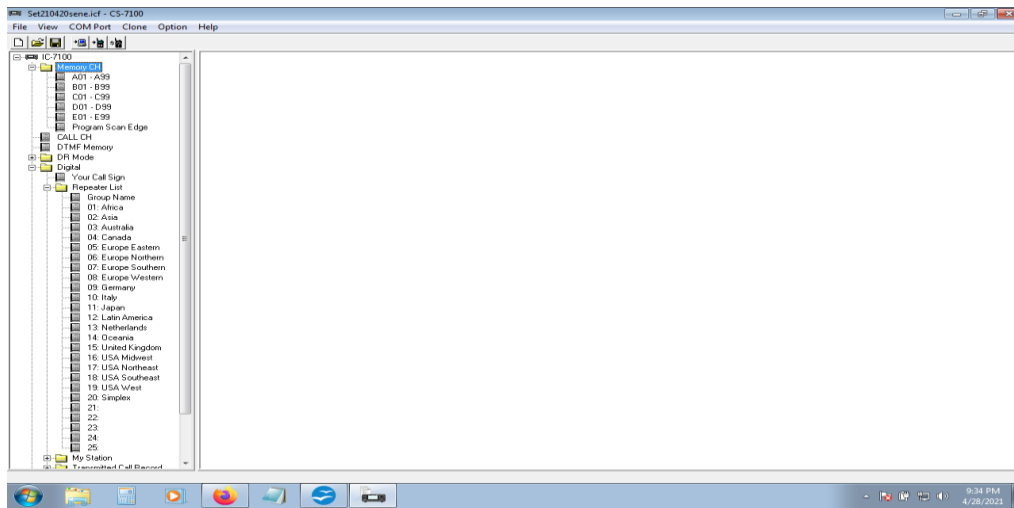
NOW TO USE CS7100

Using CS7100



you should see this:

now click on the plus signs to the left of MemoryCH, Digital and Repeater List



now you can look and see what is in your memory channels, click on A01-A99 and here is what I have saved.

Set210420sene.icf - CS-7100

File View COM Port Clone Option Help

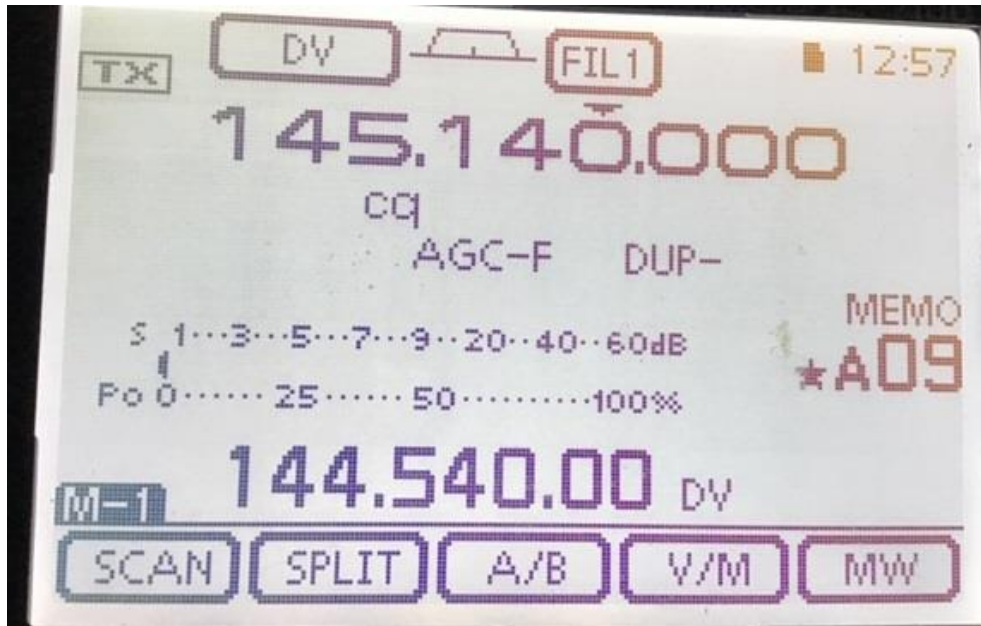
IC-7100

Memory CH

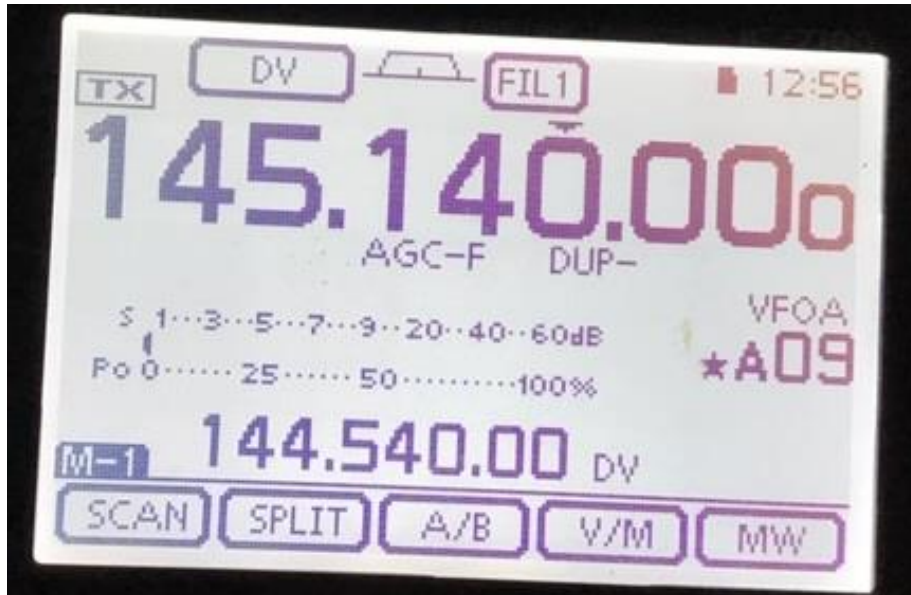
CH	Name	SEL	Split	Frequency					Tone/TSQ/DTCS				
				Operating Freq	DUP	Offset Freq	Mode	DATA	Filter	Tone	Repeater Tone	TSQL Freq	
A01				1.810000		0.500000	CW	--	2			88.5	88.5
A02	4RN			3.567000		0.500000	CW	--	2			88.5	88.5
A03	CN			3.571000		0.500000	CW	--	2			88.5	88.5
A04	NCEN			3.923000		0.500000	LSB		2			88.5	88.5
A05	NCMN			3.927000		0.500000	LSB		2			88.5	88.5
A06													
A07	23 SPENCER MTN			145.230000	-DUP	0.600000	FM		3	TONE		118.8	88.5
A08	MARS			146.940000	-DUP	0.600000	FM		1	TONE		118.8	88.5
A09	cq	ON		145.140000	-DUP	0.600000	DV	--	1			88.5	88.5
A10	52 DIRECT	ON		146.520000		0.600000	FM		1			88.5	88.5
A11	55 DIRECT			146.550000		0.600000	FM		1			88.5	88.5
A12	k4kay			444.350000	+DUP	5.000000	FM		1	TONE		151.4	88.5
A13	I			145.140000	-DUP	0.600000	DV	--	1			88.5	88.5
A14	U			145.140000	-DUP	0.600000	DV	--	1			88.5	88.5
A15	wxs cq	ON		145.140000	-DUP	0.600000	DV	--	1			88.5	88.5
A16	Charlot REF054 L			145.140000	-DUP	0.600000	DV	--	1			88.5	88.5
A17	WXS CQCQCQ			145.140000	-DUP	0.600000	DV	--	1			88.5	88.5
A18													
A19													
A20													
A21													
A22													
A23													
A24													
A25													

9:36 PM
4/28/2021

Here you can create Names for your Memory Channels, here is what the 7100 looks like with and without names

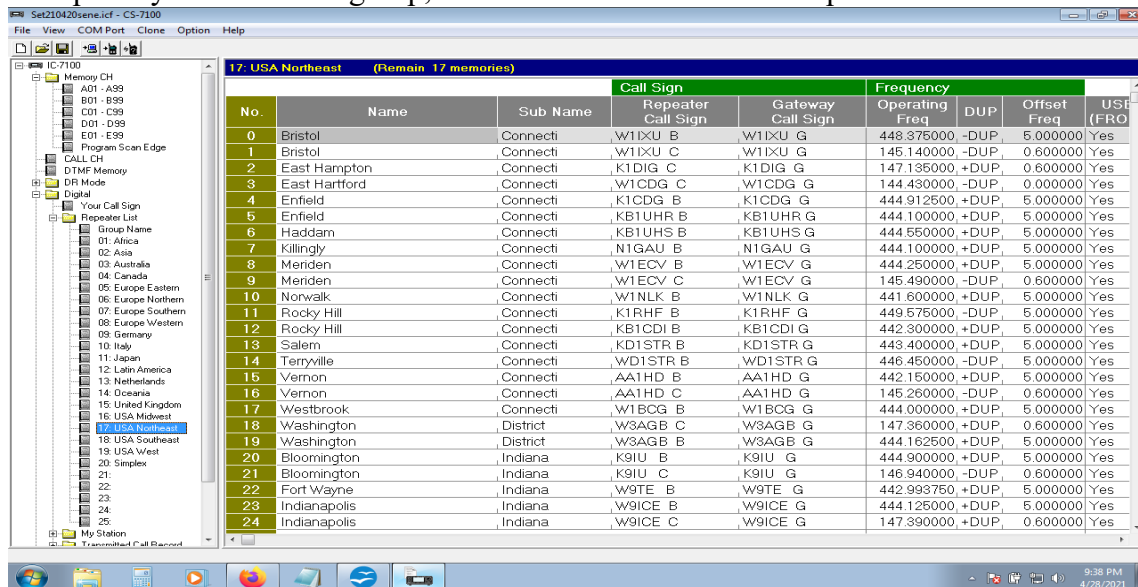


This channel named "cq"

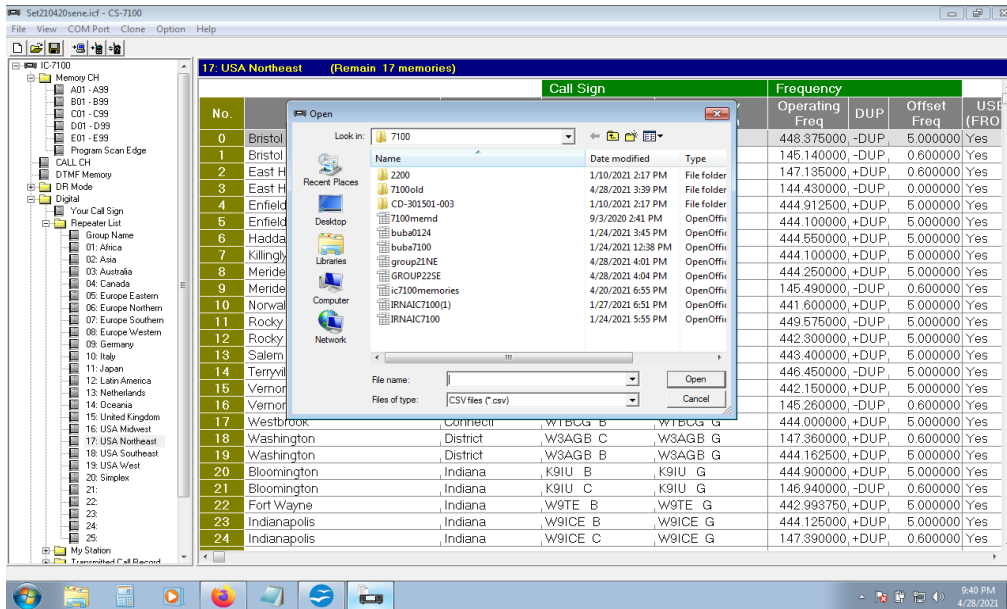


Same contents, no name

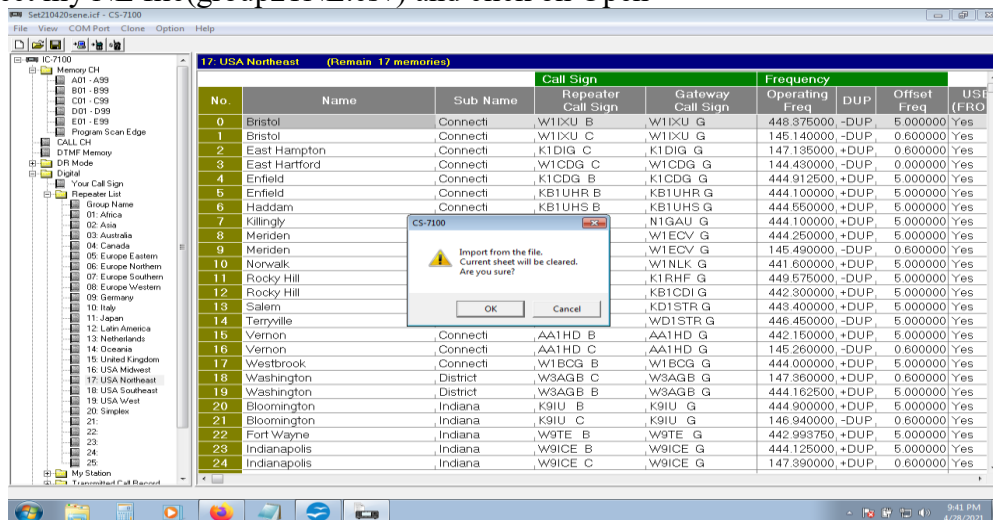
Now to update your Northeast group, click on USA Northeast. Group 21.



now click on File, Import, Group



here I select my NE file(group21NE.csv) and click on Open



Set210420senc.icf - CS-7100

File View COM Port Clone Option Help

IC-7100

17: USA Northeast (Remain 17 memories)

No.	Name	Sub Name	Repeater Call Sign	Gateway Call Sign	Operating Freq	DUP	Offset Freq	USE (FRO)
0	Bristol	Connecti	W1IXU B	W1IXU G	448.375000	-DUP	5.000000	Yes
1	Bristol	Connecti	W1IXU C	W1IXU G	145.140000	-DUP	0.600000	Yes
2	East Hampton	Connecti	K1DIG C	K1DIG G	147.135000	+DUP	0.600000	Yes
3	East Hartford	Connecti	W1CDG C	W1CDG G	144.430000	-DUP	0.000000	Yes
4	Enfield	Connecti	K1CDG B	K1CDG G	444.912500	+DUP	5.000000	Yes
5	Enfield	Connecti	KB1UHR B	KB1UHR G	444.100000	+DUP	5.000000	Yes
6	Haddam	Connecti	KB1UHS B	KB1UHS G	444.550000	+DUP	5.000000	Yes
7	Killingly		N1GAU G		444.100000	+DUP	5.000000	Yes
8	Meriden		W1ECV G		444.250000	+DUP	5.000000	Yes
9	Meriden		W1ECV G		145.490000	-DUP	0.600000	Yes
10	Norwalk		W1NLK G		441.600000	+DUP	5.000000	Yes
11	Rocky Hill		K1RHF G		449.575000	-DUP	5.000000	Yes
12	Rocky Hill		KB1CDI G		442.300000	+DUP	5.000000	Yes
13	Salem		KD1STR G		443.400000	+DUP	5.000000	Yes
14	Terryville	Connecti	WD1STR B	WD1STR G	446.450000	-DUP	5.000000	Yes
15	Vernon	Connecti	AA1HD B	AA1HD G	442.150000	+DUP	5.000000	Yes
16	Vernon	Connecti	AA1HD C	AA1HD G	145.260000	-DUP	0.600000	Yes
17	Westbrook	Connecti	W1BCG B	W1BCG G	444.000000	+DUP	5.000000	Yes
18	Washington	District	W3AGB C	W3AGB G	147.360000	+DUP	0.600000	Yes
19	Washington	District	W3AGB B	W3AGB G	444.162500	+DUP	5.000000	Yes
20	Bloomington	Indiana	K9IU B	K9IU G	444.900000	+DUP	5.000000	Yes
21	Bloomington	Indiana	K9IU C	K9IU G	146.940000	-DUP	0.600000	Yes
22	Fort Wayne	Indiana	W9TE B	W9TE G	442.993750	+DUP	5.000000	Yes
23	Indianapolis	Indiana	W9ICE B	W9ICE G	444.125000	+DUP	5.000000	Yes
24	Indianapolis	Indiana	W9ICE C	W9ICE G	147.390000	+DUP	0.600000	Yes

CS-7100

Keep USE(FROM) settings in the Repeater List?

Yes No

9:41 PM
4/28/2021

Click YES

Set210420senc.icf - CS-7100

File View COM Port Clone Option Help

IC-7100

17: USA Northeast (Remain 17 memories)

No.	Name	Sub Name	Repeater Call Sign	Gateway Call Sign	Operating Freq	DUP	Offset Freq	USE (FRO)
0	Bristol	Connecti	W1IXU B	W1IXU G	448.375000	-DUP	5.000000	Yes
1	Bristol	Connecti	W1IXU C	W1IXU G	145.140000	-DUP	0.600000	Yes
2	East Hampton	Connecti	K1DIG C	K1DIG G	147.135000	+DUP	0.600000	Yes
3	East Hartford	Connecti	W1CDG C	W1CDG G	144.430000	-DUP	0.000000	Yes
4	Enfield	Connecti	K1CDG B	K1CDG G	444.912500	+DUP	5.000000	Yes
5	Enfield	Connecti	KB1UHR B	KB1UHR G	444.100000	+DUP	5.000000	Yes
6	Haddam	Connecti	KB1UHS B	KB1UHS G	444.550000	+DUP	5.000000	Yes
7	Killingly		N1GAU G		444.100000	+DUP	5.000000	Yes
8	Meriden		W1ECV G		444.250000	+DUP	5.000000	Yes
9	Meriden		W1ECV G		145.490000	-DUP	0.600000	Yes
10	Norwalk		W1NLK G		441.600000	+DUP	5.000000	Yes
11	Rocky Hill		K1RHF G		449.575000	-DUP	5.000000	Yes
12	Rocky Hill		KB1CDI G		442.300000	+DUP	5.000000	Yes
13	Salem		KD1STR G		443.400000	+DUP	5.000000	Yes
14	Terryville	Connecti	WD1STR B	WD1STR G	446.450000	-DUP	5.000000	Yes
15	Vernon	Connecti	AA1HD B	AA1HD G	442.150000	+DUP	5.000000	Yes
16	Vernon	Connecti	AA1HD C	AA1HD G	145.260000	-DUP	0.600000	Yes
17	Westbrook	Connecti	W1BCG B	W1BCG G	444.000000	+DUP	5.000000	Yes
18	Washington	District	W3AGB C	W3AGB G	147.360000	+DUP	0.600000	Yes
19	Washington	District	W3AGB B	W3AGB G	444.162500	+DUP	5.000000	Yes
20	Bloomington	Indiana	K9IU B	K9IU G	444.900000	+DUP	5.000000	Yes
21	Bloomington	Indiana	K9IU C	K9IU G	146.940000	-DUP	0.600000	Yes
22	Fort Wayne	Indiana	W9TE B	W9TE G	442.993750	+DUP	5.000000	Yes
23	Indianapolis	Indiana	W9ICE B	W9ICE G	444.125000	+DUP	5.000000	Yes
24	Indianapolis	Indiana	W9ICE C	W9ICE G	147.390000	+DUP	0.600000	Yes

CS-7100

Some settings are changed to the valid value.

OK

9:43 PM
4/28/2021

click OK

IC-7100

17- USA Northeast (Remain 17 memories)

No.	Name	Sub Name	Call Sign		Frequency			USB (FRO)
			Repeater Call Sign	Gateway Call Sign	Operating Freq	DUP	Offset Freq	
0	Bristol	Connect	W1IXU B	W1IXU G	448.375000	-DUP	5.000000	Yes
1	Bristol	Connect	W1IXU C	W1IXU G	145.140000	-DUP	0.600000	Yes
2	East Hampton	Connect	K1DIG C	K1DIG G	147.135000	+DUP	0.600000	Yes
3	East Hartford	Connect	W1CDG C	W1CDG G	144.430000	-DUP	0.000000	Yes
4	Enfield	Connect	K1CDG B	K1CDG G	444.912500	+DUP	5.000000	Yes
5	Enfield	Connect	KB1UHR B	KB1UHR G	444.100000	+DUP	5.000000	Yes
6	Haddam	Connect	KB1UHS B	KB1UHS G	444.650000	+DUP	5.000000	Yes
7	Killingly	Connect	N1GAU B	N1GAU G	444.100000	+DUP	5.000000	Yes
8	Meriden	Connect	W1ECV B	W1ECV G	444.250000	+DUP	5.000000	Yes
9	Meriden	Connect	W1ECV C	W1ECV G	145.490000	-DUP	0.600000	Yes
10	Norwalk	Connect	W1NLK B	W1NLK G	441.600000	+DUP	5.000000	Yes
11	Rocky Hill	Connect	K1RHF B	K1RHF G	449.575000	-DUP	5.000000	Yes
12	Rocky Hill	Connect	KB1CDI B	KB1CDI G	442.300000	+DUP	5.000000	Yes
13	Salem	Connect	KD1STR B	KD1STR G	443.400000	+DUP	5.000000	Yes
14	Terryville	Connect	WD1STR B	WD1STR G	446.450000	-DUP	5.000000	Yes
15	Vernon	Connect	AA1HD B	AA1HD G	442.150000	+DUP	5.000000	Yes
16	Vernon	Connect	AA1HD C	AA1HD G	145.260000	-DUP	0.600000	Yes
17	Westbrook	Connect	W1BCG B	W1BCG G	444.000000	+DUP	5.000000	Yes
18	Washington	District	W3AGB C	W3AGB G	147.360000	+DUP	0.600000	Yes
19	Washington	District	W3AGB B	W3AGB G	444.162500	+DUP	5.000000	Yes
20	Bloomington	Indiana	K9IU B	K9IU G	444.900000	+DUP	5.000000	Yes
21	Bloomington	Indiana	K9IU C	K9IU G	146.940000	-DUP	0.600000	Yes
22	Fort Wayne	Indiana	W9TE B	W9TE G	442.993750	+DUP	5.000000	Yes
23	Indianapolis	Indiana	W9ICE B	W9ICE G	444.125000	+DUP	5.000000	Yes
24	Indianapolis	Indiana	W9ICE C	W9ICE G	147.390000	+DUP	0.600000	Yes

ONE Group done!
Now you can do others as needed.