

Quick and Easy Setup for Digital on ICOM 7100

by W4EDN

Today I setup my PC and 7100 to go digital, VARA (Winlink) and FT8, (separately, not at one time of course).

Summary: Setup 7100 for USB modulation. Setup PC for 7100 CAT address (88), USB Audio, and Com port. (Need to install FREE ICOM USB driver first).

Step 1: Download and Install USB driver from (Search for ICOM USB Driver)

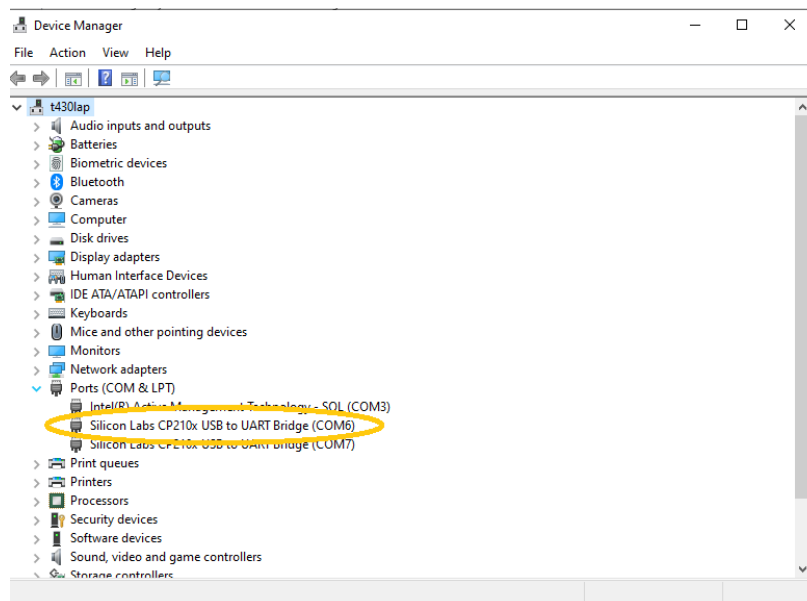
https://www.icomjapan.com/support/firmware_driver/2417/

Step 2: Connect USB to 7100 and determine COM port number. Using a USB mini



USB cable, connect your 7100 to a USB port on the computer. Open Device Manager, scroll down to PORTS and record the number for the radio.(mine was COM 6)

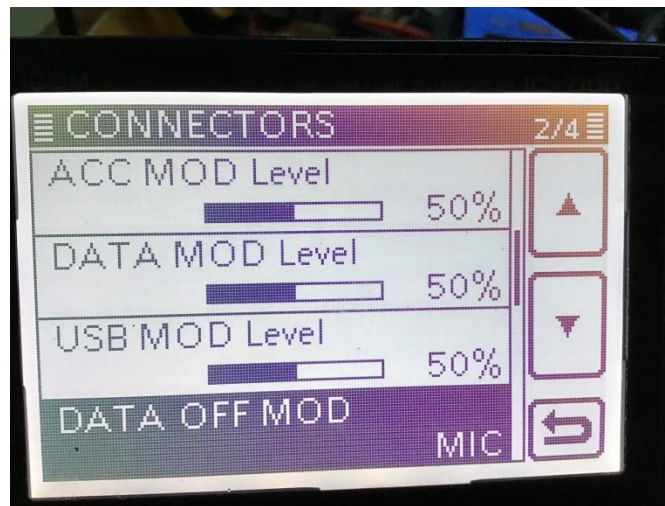
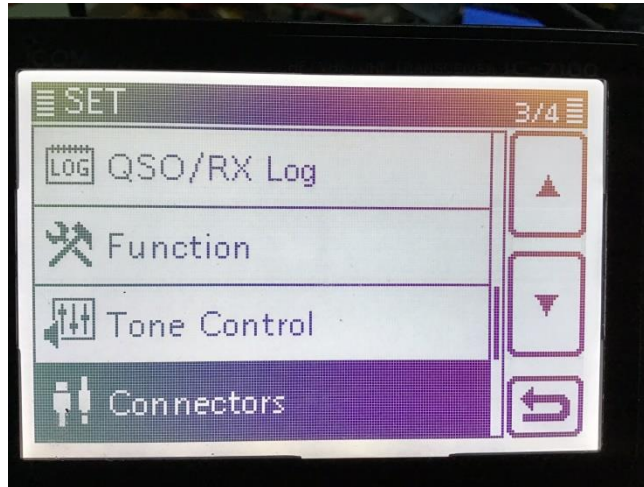
Silicon Labs CP210X USB to UART Bridge(Com6)



Quick and Easy Setup for Digital on ICOM 7100

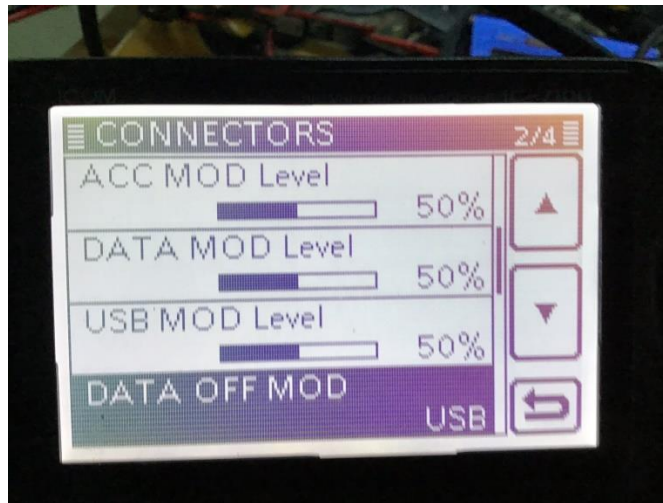
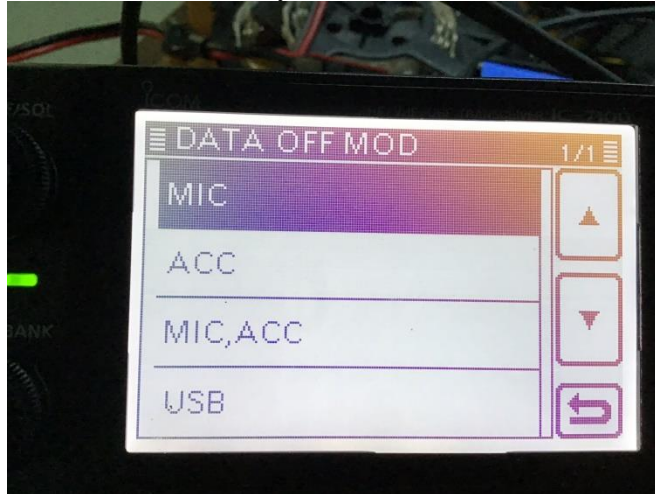
by W4EDN

Step 3: in the 7100, press the SET button, then on screen touch CONNECTORS, then DATA MOD, select USB should have been set to MIC, REMEMBER THIS AS YOU NEED TO CHANGE THIS BACK TO USE NORMALLY ON SSB!!! (I posted a post it note on the radio to remind me)



Quick and Easy Setup for Digital on ICOM 7100

by W4EDN



HERE I switch from VARA or FT8 (WSJT).

FOR VARA

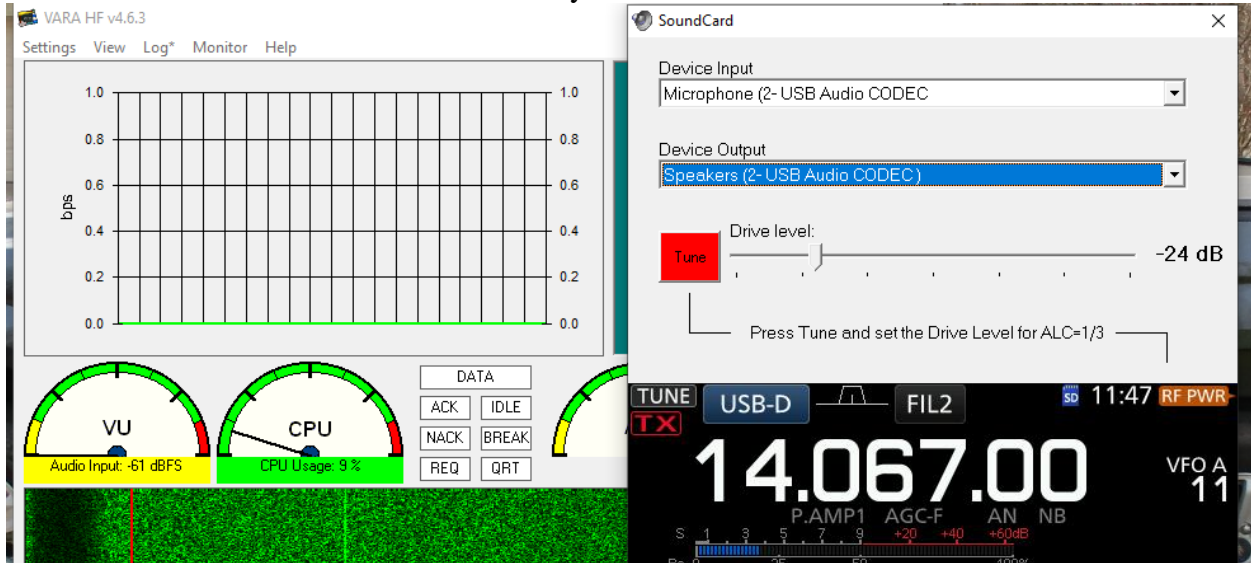
Open the VARA APP.



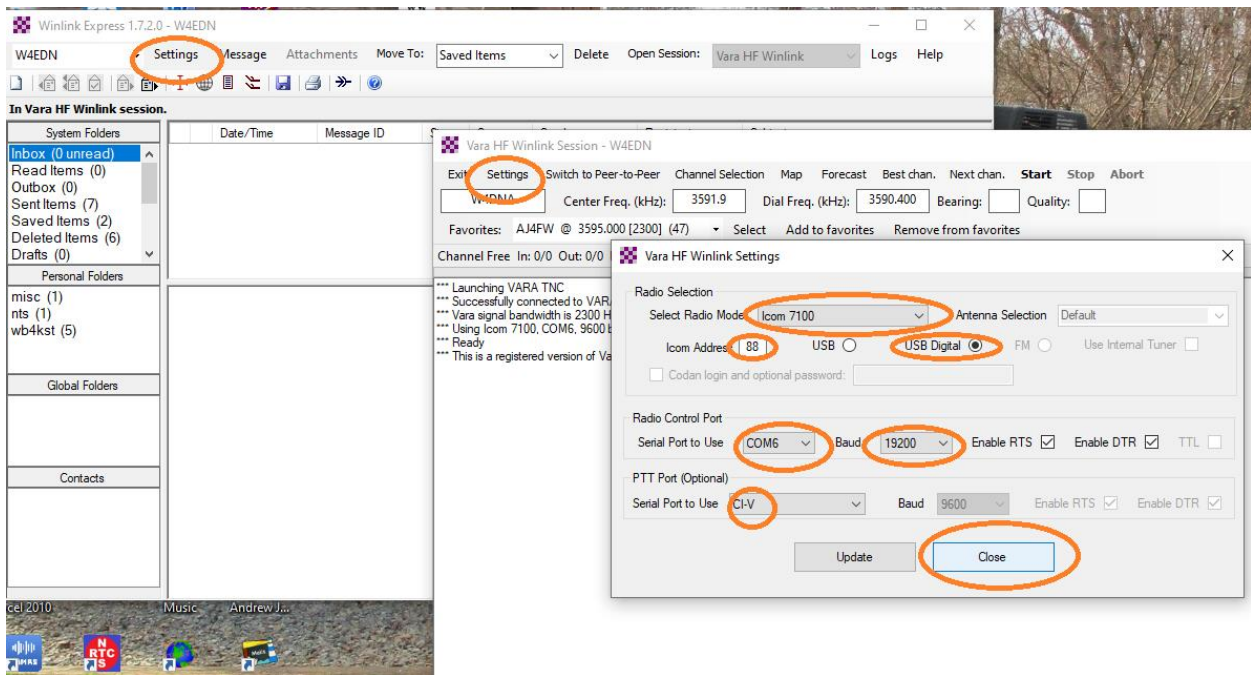
Click on **SETTINGS**, **SOUNDCARD** and select the two **USB CODEC** devices in each list then click **Update** then **CLOSE**.

Quick and Easy Setup for Digital on ICOM 7100

by W4EDN



Open the Winlink Express App, start the VARA HF Session, go to SETTINGS, Radio Setup and select the Radio ICOM 7100, the ICOM address to 88 and USB Digital, set Com port and baud rate. Then click on Close. now Restart Winlink for changes to take effect.

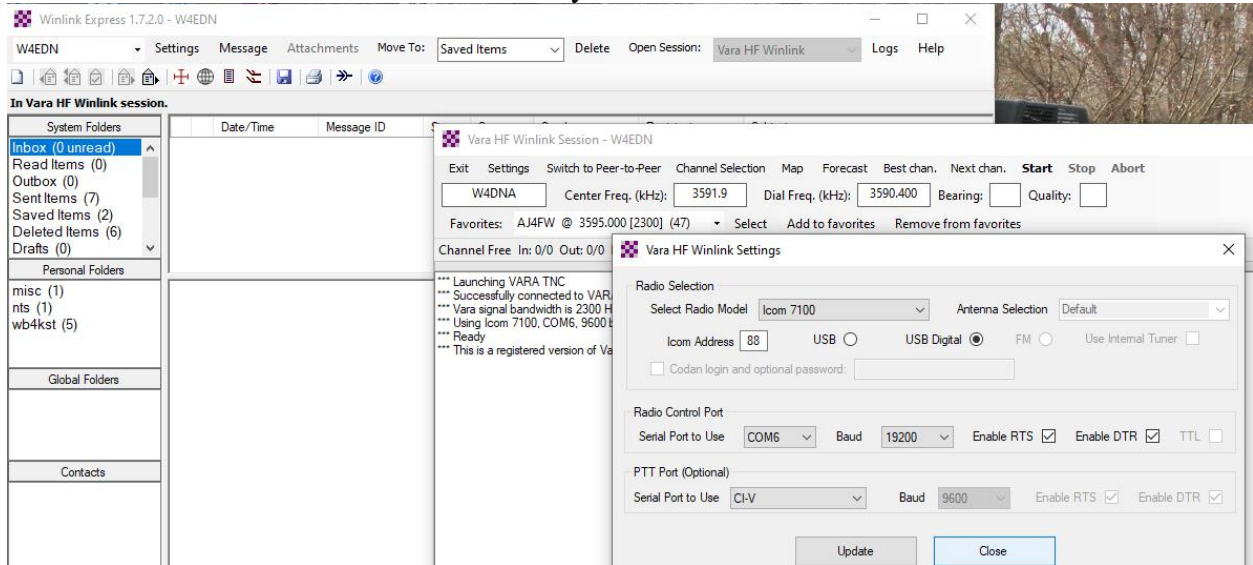


FOR WSJT (FT8)

Start the WSJT app, Click on FILE, Settings, Radio.

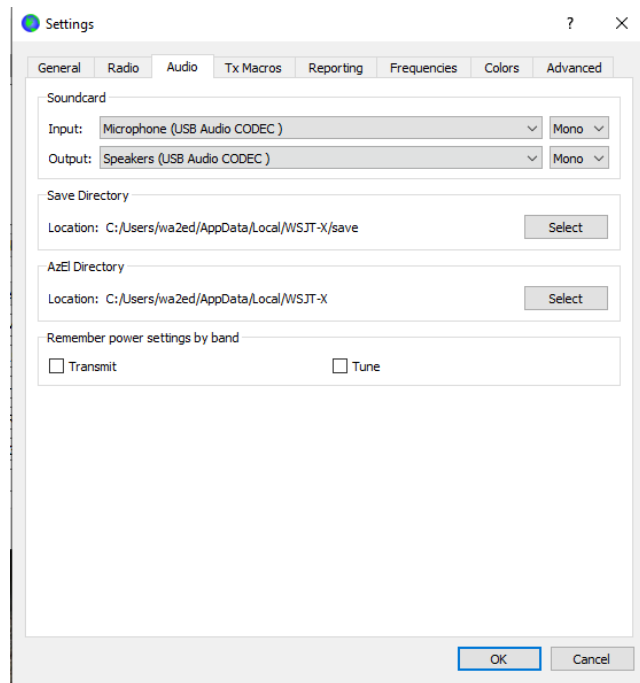
Quick and Easy Setup for Digital on ICOM 7100

by W4EDN



Select ICOM 7100 as the RIG and the com port you found above .Baud rate 19200, PTT method CAT, and Mode to Data/Pkt. now click on OK.

Click on the Audio tab and Select the USB CODEC choice in each.



Now if you close WSJT and re open, It should show the frequency that is set on the 7100.

THAT IS IT! REMEMBER to go back to SSB you must reset the 7100 Connector setting to MIC