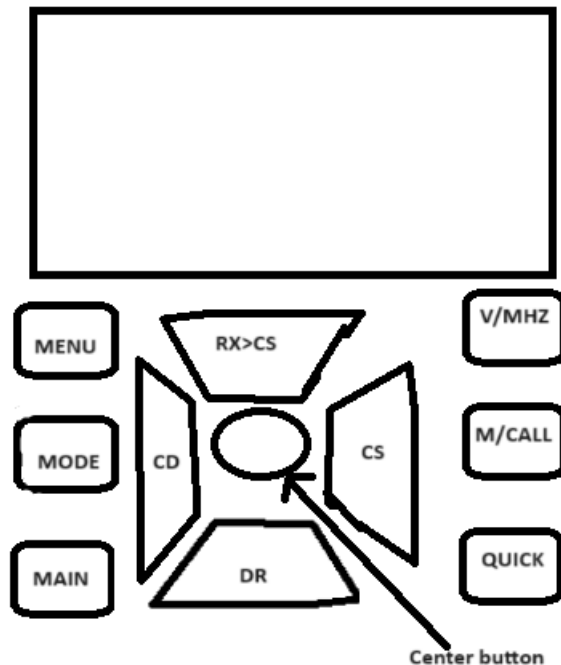


How to program your Icom ID51 handheld

This document is divided into 2 parts, Manually and using Software

Manually

Here is the keypad layout. Each key has a primary (BOLD) and a secondary (lower – light) function. The secondary function is accessed by a long press(2 seconds) on that key.



Lets begin with setting the VFO yo 146.52 Simplex, Then we will save into a memory then load a repeater into VFO and save it in a memory slot.

Press V/MHZ to select VFO mode.

If you need to change the MHZ press V/MHZ again and use the knob to adjust. Press again and it moves to tens of MHZ then back to KHZ. Use the knob to adjust as needed.

The radio is now set for 146.52 simplex..

You can select power by a long press (press and hold for 2 seconds) the V/MHZ key. Choices are SLO, LO1, LO2, MID or blank(high).

Now let's save it in memory slot 26

Long press the M/CALL key, this brings up a screen where you can select the slot and see if it is blank or not, rotate the knob to change memory number. When done long press the M/CALL button again. A double beep confirms it is written. If you decide not to write to memory, just press the PTT to go back to the VFO screen.

How to program your Icom ID51 handheld

Now let's set up a repeater in the VFO then write it to memory 30.

Press V/MHZ and using the method above set the frequency to 146.940. This repeater requires a 118.8 HZ tone and has a minus 600 KHZ offset.

Now we will set/verify the Tone and offset.

Press MENU. Using the rotating knob select the DUP/TONE line and press the center button

Now select the OFFSET FREQ line and press the center button, Verify it is set for 0.600.000 hz.

You can change it with the rotating knob, when done press the center button. Now select RPT TONE, and press the center button. Change the setting to 118.8 by rotating the knob and press the center button,

Now press MENU to go back

Now we have to enable the tone and minus offset

To enable the – OFFSET press the QUICK button. Select DUP and press the center button.

To enable minus offset, press the center button and select –DUP with the rotating knob, Press the center button to save. DUP- appears on the display.

For TONE, Press QUICK, select TONE, Press center button, select TONE press center button, TONE should now be on the display next to DUP-

Now you can test your setting if you can reach the repeater. To change power long press the V/MHZ KEY. Choices are SLO, LO1, LO2, MID or blank(high).

Now to save it into memory slot 30:

Long press M/CALL. Rotate the knob to select channel 30 and long press M/CALL again. The double beep confirms writing.

Software

I use ICOM's CS-51plus2

I use the SDCARD method, Cable method follows.

SDCARD

Insert a Micro SD card into the slot in the radio

Press MENU, Select SD CARD (next to last item). Press center button.

Select Save Setting, Press center button.

Save File ? Move to YES and Press center button, Radio data is written to SDCARD.

Press MENU to return to frequency screen.

Remove SDCARD and place in adapter for PC.

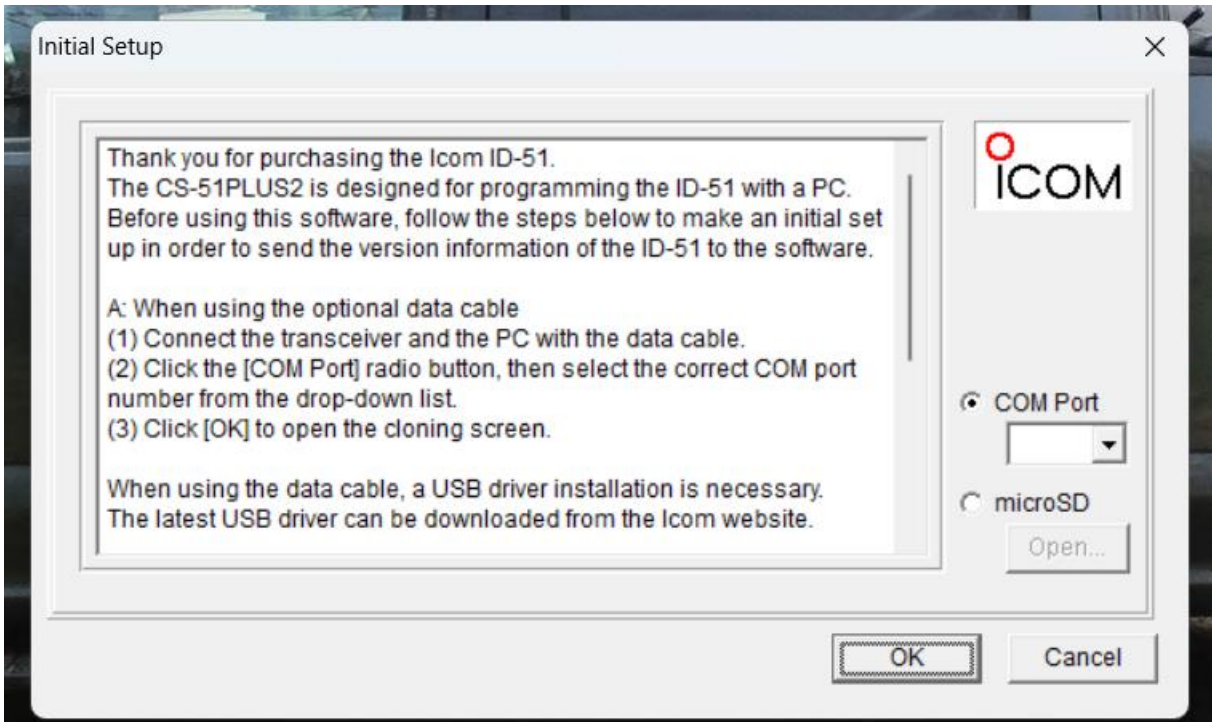
How to program your Icom ID51 handheld

Place adapter into PC.

The data file is located in the Id51 directory. My file was named "Set20240323_01.icf"
YearMonthDay_01.icf

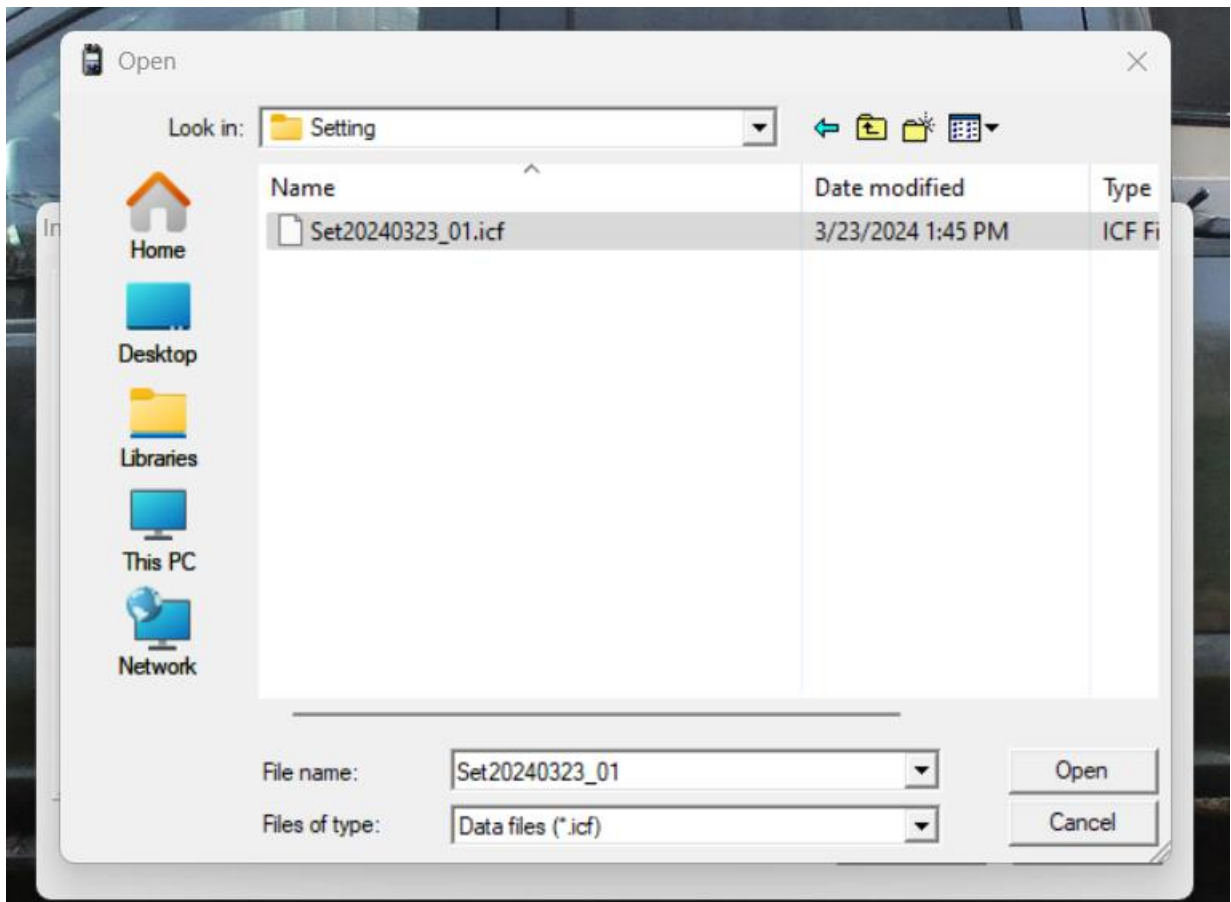
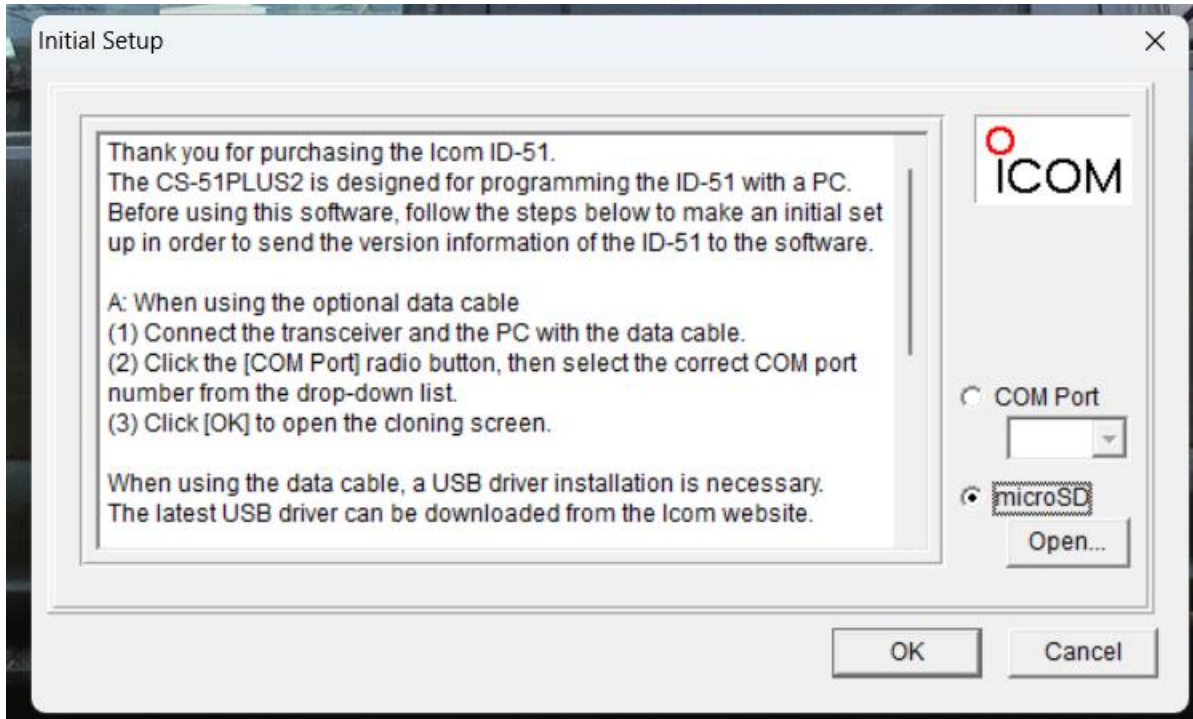
I open the program CS-51PLUS2

For only the first time I got this screen:



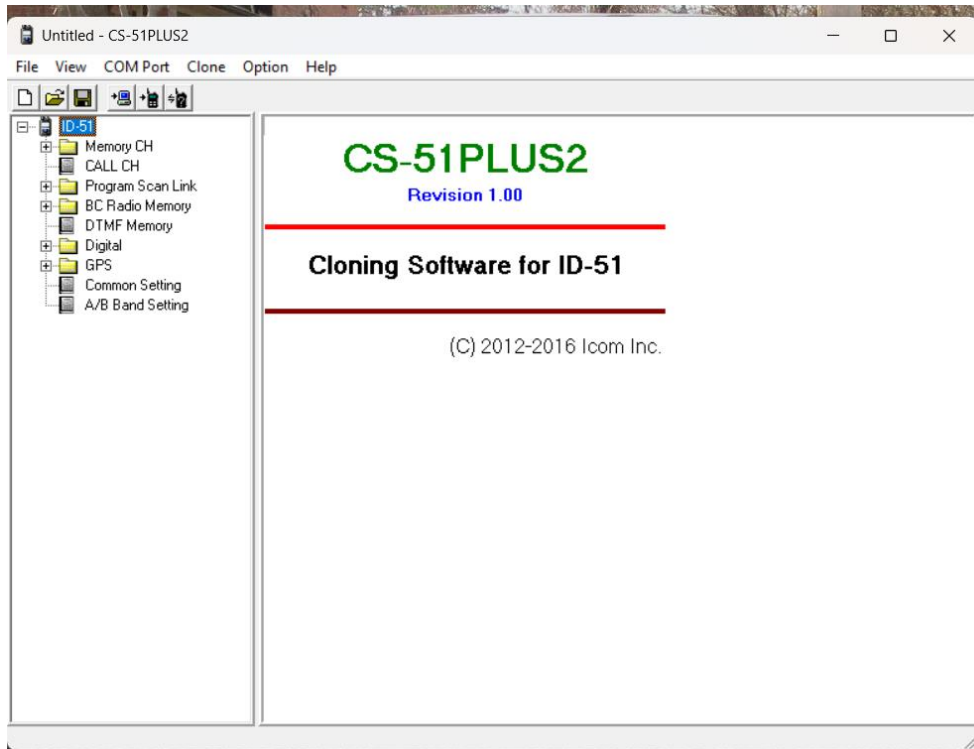
Since I am using an SDCARD, I checked microSD and clicked
OPEN

How to program your Icom ID51 handheld



How to program your Icom ID51 handheld

I found the icf file under settings in the iD51 folder. Click Open.



I select Memory CH and select 0-99.

How to program your Icom ID51 handheld

The screenshot shows the 'Memory CH' window in the Icom ID-51 programming software. The window title is 'Set20240323_01.icf [Old Model Format] - CS-51PLUS2'. The interface includes a menu bar (File, View, COM Port, Clone, Option, Help) and a toolbar. On the left, there is a tree view showing the radio's memory structure, including 'Memory CH', 'Bank CH', 'CALL CH', 'Program Scan Link', 'BC Radio Memory', 'DTMF Memory', 'Digital', 'GPS', 'Common Setting', and 'A/B Band Setting'. The main area displays a table of memory channels.

CH	Frequency					Tone/TSQ/DTCS				
	Operating Freq	DUP	Offset Freq	TS	Mode	Name	Skip	Tone	Repeater Tone	TSQ Freq
0	146.010000		0.600000	5k	FM				88.5	88.5
1	146.940000	-DUP	0.600000	5k	FM	W4BFB		TONE	118.8	88.5
2	444.350000	+DUP	5.000000	25k	FM	K4KAY		TONE	151.4	88.5
3	145.230000	-DUP	0.600000	5k	FM	SPENCER 23		TONE	118.8	88.5
4	146.985000	-DUP	0.600000	5k	FM	ALBEMARLE		TONE	77.0	88.5
5	145.510000		0.600000	5k	FM	XBAND 2M			88.5	88.5
6	442.650000	+DUP	5.000000	25k	FM	UNCC		TONE	88.5	88.5
7	441.800000	+DUP	5.000000	25k	FM	THMSVILLE		TONE	127.3	88.5
8	444.600000	+DUP	5.000000	25k	FM	BFB DT		TONE	118.8	88.5
9	145.490000	+DUP	0.600000	5k	FM	CHERAW		TONE	123.0	88.5
10	147.985000	+DUP	0.600000	5k	FM	FLORENCE		TONE	123.0	88.5
11										
12	442.050000	+DUP	5.000000	25k	FM	CROWDER MTN		DTCS	88.5	88.5
13	442.700000	+DUP	5.000000	25k	FM	KC4IRA CROWDERS		TONE	100.0	88.5
14	444.525000	+DUP	5.000000	25k	FM	WAXHAW JAARS		TONE	94.8	88.5
15	443.475000	+DUP	5.000000	25k	FM	INDIANLANF KT4TF		TONE	110.9	88.5
16	443.800000	+DUP	5.000000	25k	FM	W4FTK ROCK HILL		DTCS	88.5	88.5
17	444.925000	+DUP	5.000000	25k	FM	ROCK HILL W4FTK		TONE	91.5	88.5
18	146.895000	-DUP	0.600000	5k	FM	PAGELAND		TONE	123.0	88.5
19	441.525000	+DUP	5.000000	25k	FM	ROCK HILL		TONE	162.2	88.5
20	444.100000	+DUP	5.000000	25k	FM	LANCASTER		TONE	192.8	88.5
21	444.325000	+DUP	5.000000	25k	FM	BLACKSBURG 1		TONE	88.5	88.5

There are my settings, I can now edit as I see fit

I have my DSTAR frequencies in channels 100 +

How to program your Icom ID51 handheld

Set20240323_02.icf [Old Model Format] - CS-51PLUS2

CH	Frequency						Tone/TSQL/DTCS			
	Operating Freq	DUP	Offset Freq	TS	Mode	Name	Skip	Tone	Repeater Tone	TSQL Freq
100										
101	444.675000	+DUP	5.000000	25k	DV	W4WBT DSTAR			88.5	88.5
102	444.862500	+DUP	5.000000	25k	DV	WINGATE			88.5	88.5
103	443.862500	+DUP	5.000000	25k	DV	GASTONIA			88.5	88.5
104	444.675000	+DUP	5.000000	25k	DV	W4WBT I			88.5	88.5
105										
106										
107	443.575000	-DUP	0.000000	25k	DV	HOTSPOT2			88.5	88.5
108	443.550000	-DUP	0.000000	25k	DV	HOTSPOT			88.5	88.5
109	444.862500	+DUP	5.000000	25k	DV	WINGATE			88.5	88.5
110	144.920000	+DUP	0.600000	5k	DV	ALBEMARLE			88.5	88.5
111	444.675000	+DUP	5.000000	25k	DV	W4WBT CQ DSTAR			88.5	88.5
112	443.550000	-DUP	0.000000	25k	DV	HOTSPOT 54CL			88.5	88.5
113	443.550000	-DUP	0.000000	25k	DV	HOTSPOT 38CL			88.5	88.5
114	443.550000	-DUP	0.000000	25k	DV	HOTSPOT 30CL			88.5	88.5
115	443.550000	-DUP	0.000000	25k	DV	HOTSPOT 62CL			88.5	88.5
116	443.550000	-DUP	0.000000	25k	DV	HOTSPOT 20CL			88.5	88.5
117	443.550000	-DUP	0.000000	25k	DV	HOTSPOT 40CL			88.5	88.5
118	443.550000	-DUP	0.000000	25k	DV	HOTSPOT 50CL			88.5	88.5
119	443.575000	-DUP	0.000000	25k	DV				88.5	88.5
120										
121										

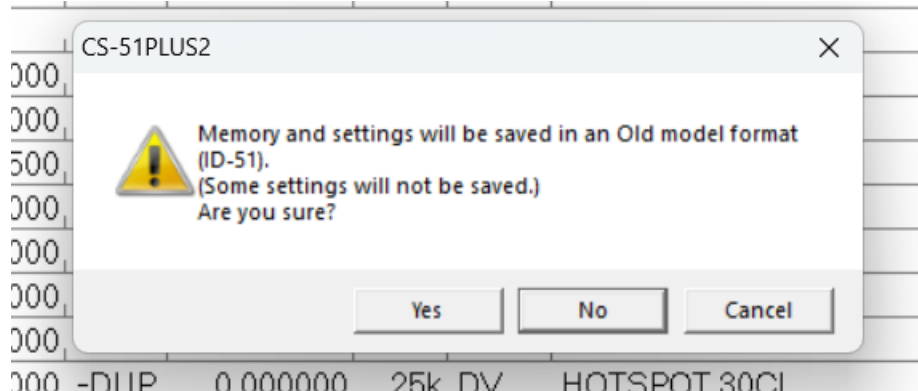
The DSTAR fields are off to the right.

Set20240323_01.icf [Old Model Format] - CS-51PLUS2

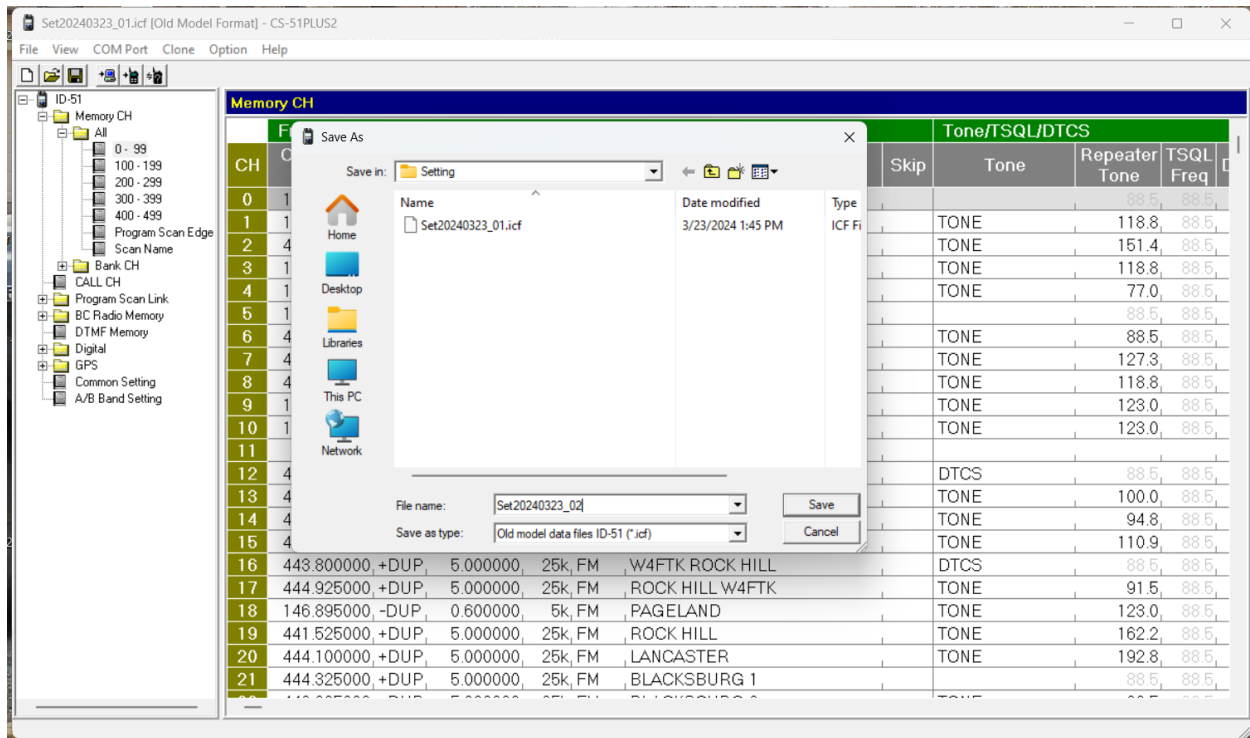
CH	DTCS Polarity	Digital		Call Sign			Bank	
		DSQL	Code	Your	RPT1	RPT2	Group	Ch
100								
101	Both N		00	CQCQCQ	W4WBT B	W4WBT G		
102	Both N		00	CQCQCQ	W4FAN B	W4FAN G		
103	Both N		00	CQCQCQ	KK4JDH B	KK4JDH G		
104	Both N		00	I	W4WBT B	W4WBT G		
105								
106								
107	Both N		00	CQCQCQ	W4EDN B	W4EDN G		
108	Both N		00	CQCQCQ	W4EDN B	W4EDN G		
109	Both N		00	CQCQCQ	W4FAN B	W4FAN G		
110	Both N		00	CQCQCQ	K4DVA C	K4DVA G		
111	Both N		00	CQCQCQ	W4WBT B	W4WBT G		
112	Both N		00	REF054CL	W4EDN B	W4EDN G		
113	Both N		00	REF038CL	W4EDN B	W4EDN G		
114	Both N		00	REF030CL	W4EDN B	W4EDN G		
115	Both N		00	REF062CL	W4EDN B	W4EDN G		
116	Both N		00	REF020CL	W4EDN B	W4EDN G		
117	Both N		00	REF040CL	W4EDN B	W4EDN G		
118	Both N		00	REF050CL	W4EDN B	W4EDN G		
119	Both N		00	CQCQCQ				
120								
121								

To save click on File then Save, You will get this warning message since you are looking at ID-51 data with ID-52 software.

How to program your Icom ID51 handheld



Click on YES and you get this:



It will put the new file in same place as old and gives you a chance to rename it.

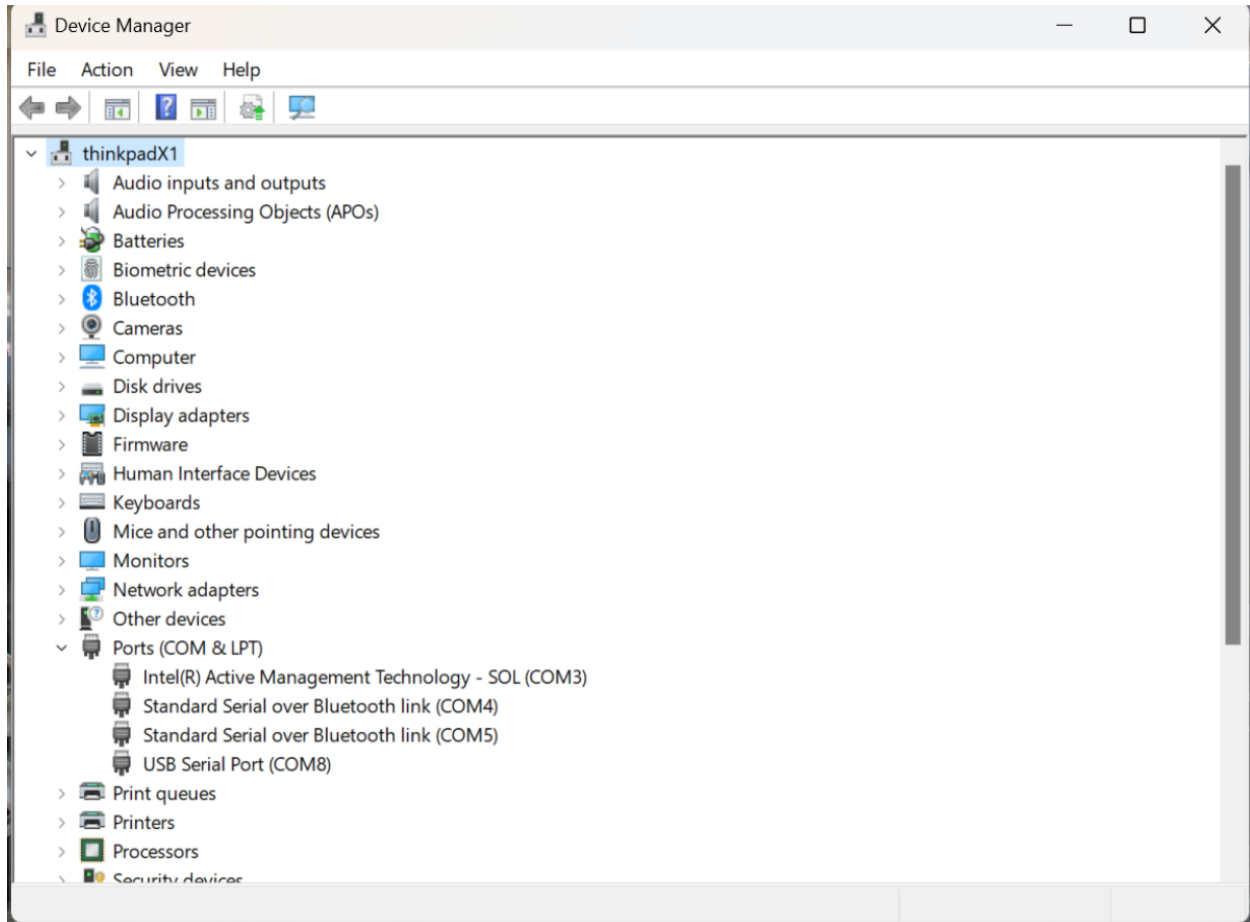
Now you can Eject the SDcard and re-insert it into the radio. Turn radio on, then Press MENU, select SDCARD, Load Settings, and select your file., OK then YES. It will check the file then load it resulting in a COMPLETED message, now REBOOT (power off then on) the radio and you are done.

How to program your Icom ID51 handheld

CABLE METHOD

Find the port of your cable using Device Manager.

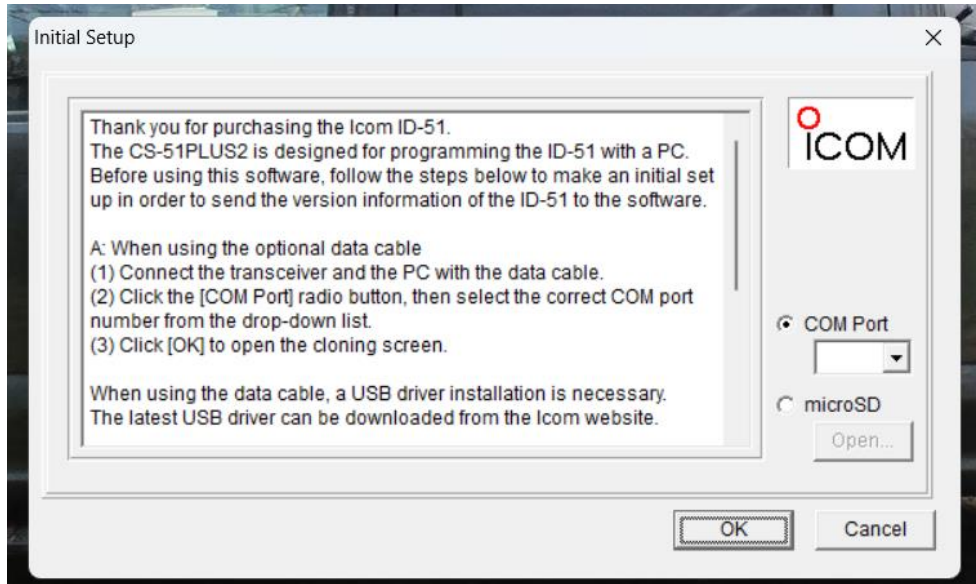
Found the com port from Device Manager



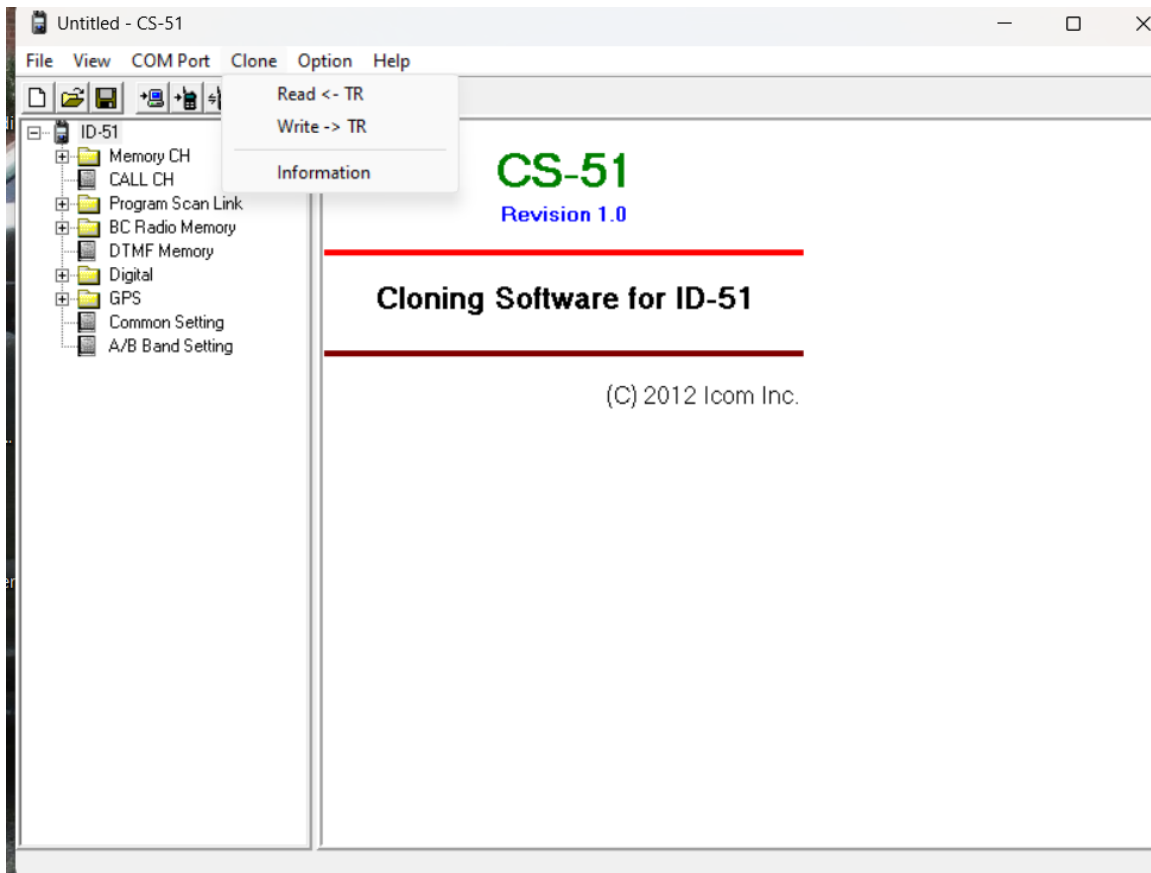
Start cs51

Select correct comport from above, 8 in this case.

How to program your Icom ID51 handheld

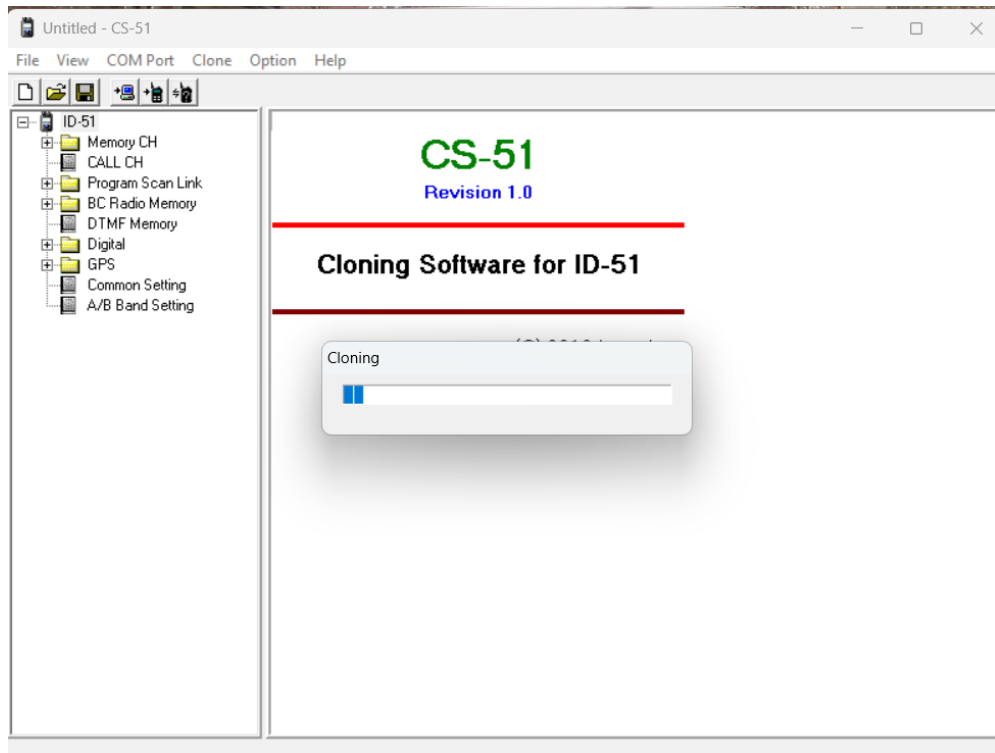


Get this screen select Clone, then Read<-TR to read the radio.

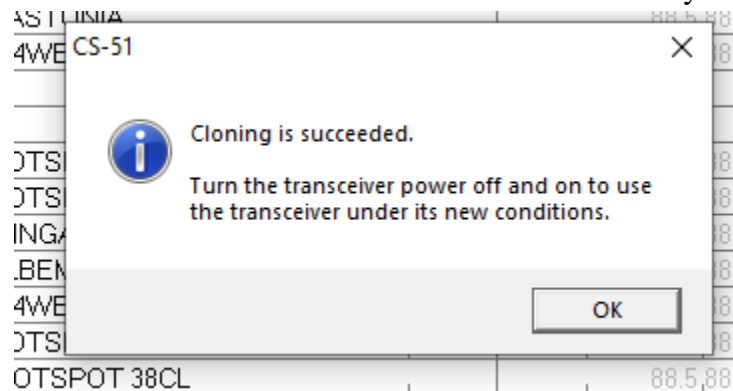


Get this: If your radio is on and plugged into the cable.

How to program your Icom ID51 handheld



Now you can edit the data like with the SDCard and save a local copy. When done, select Clone then Write->TR to write them to the radio. When it is done you get this



You are done!