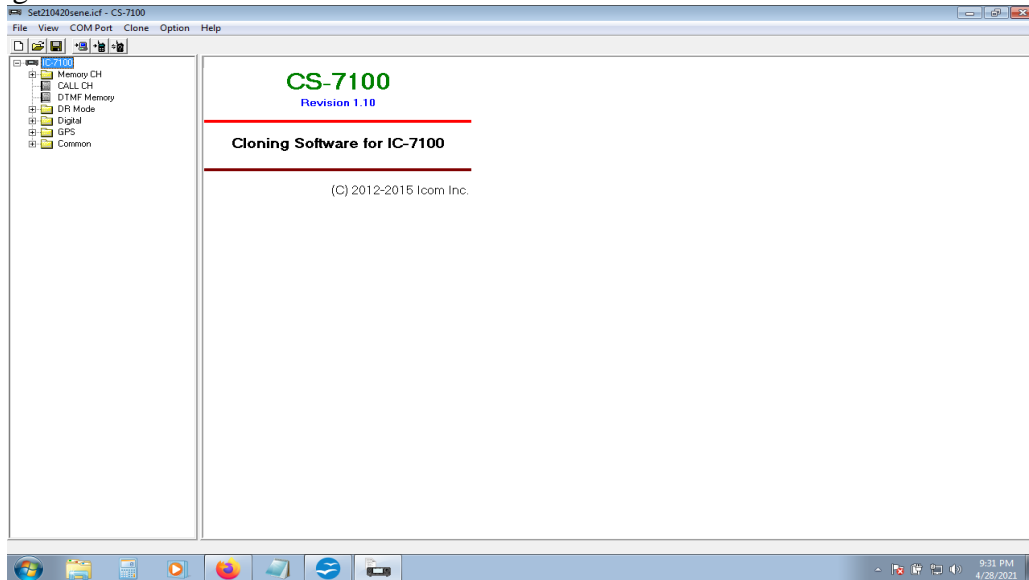
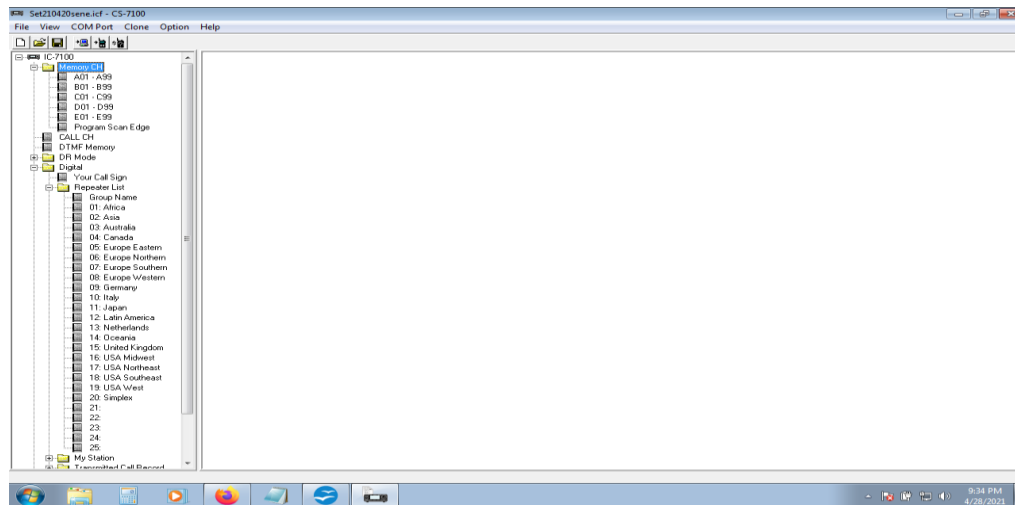


Using CS7100



you should see this:

now click on the plus signs to the left of MemoryCH, Digital and Repeater List



now you can look and see what is in your memory channels, click on A01-A99 and here is what I have saved.

Set210420senc.icf - CS-7100

File View COM Port Clone Option Help

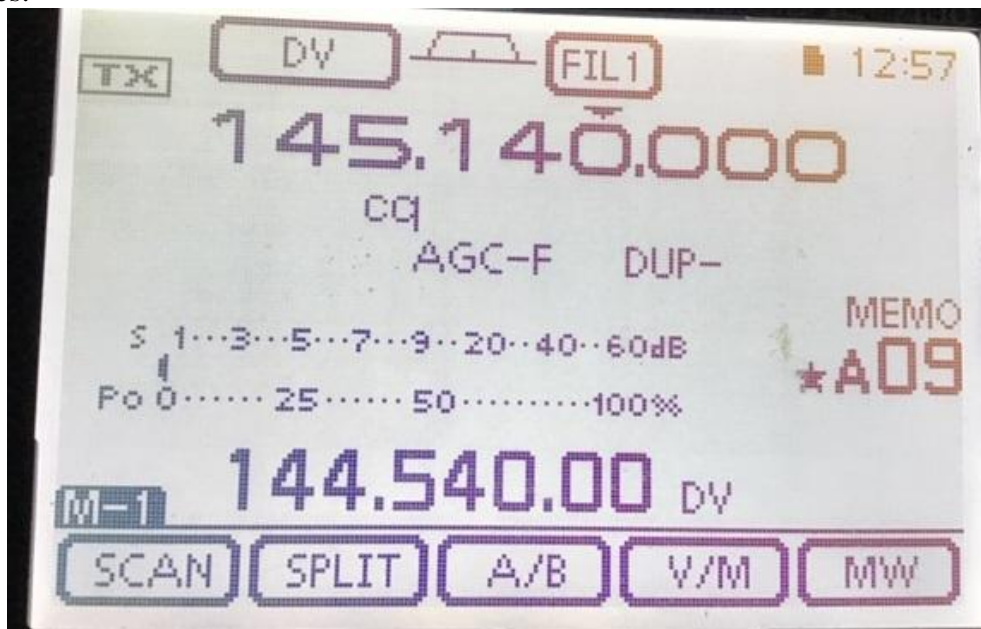
IC-7100

Memory CH

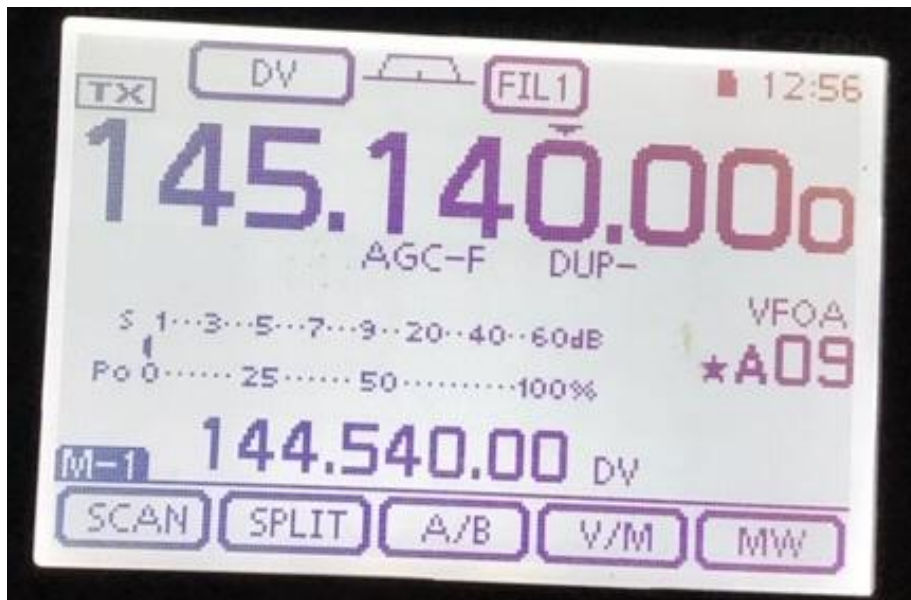
CH	Name	SEL	Split	Frequency					Tone/TSQ/DTCS			
				Operating Freq	DUP	Offset Freq	Mode	DATA	Filter	Tone	Repeater Tone	TSQ Freq
A01				1 810000		0 500000	CW	--	2		88.5	88.5
A02	4RN			3 567000		0 500000	CW	--	2		88.5	88.5
A03	CN			3 571000		0 500000	CW	--	2		88.5	88.5
A04	NCEN			3 923000		0 500000	LSB		2		88.5	88.5
A05	NCMN			3 927000		0 500000	LSB		2		88.5	88.5
A06												
A07	23 SPENCER MTN			145 230000	-DUP	0 600000	FM		3	TONE	118.8	88.5
A08	MARS			146 940000	-DUP	0 600000	FM		1	TONE	118.8	88.5
A09	cq	ON		145 140000	-DUP	0 600000	DV	--	1		88.5	88.5
A10	52 DIRECT	ON		146 520000		0 600000	FM		1		88.5	88.5
A11	55 DIRECT			146 550000		0 600000	FM		1		88.5	88.5
A12	k4kay			444 350000	+DUP	5 000000	FM		1	TONE	151.4	88.5
A13	I			145 140000	-DUP	0 600000	DV	--	1		88.5	88.5
A14	U			145 140000	-DUP	0 600000	DV	--	1		88.5	88.5
A15	wxs cq	ON		145 140000	-DUP	0 600000	DV	--	1		88.5	88.5
A16	Charlot REF054 L			145 140000	-DUP	0 600000	DV	--	1		88.5	88.5
A17	WXS CQCQCQ			145 140000	-DUP	0 600000	DV	--	1		88.5	88.5
A18												
A19												
A20												
A21												
A22												
A23												
A24												
A25												

9:36 PM 4/28/2021

Here you can create Names for your Memory Channels, here is what the 7100 looks like with and without names:

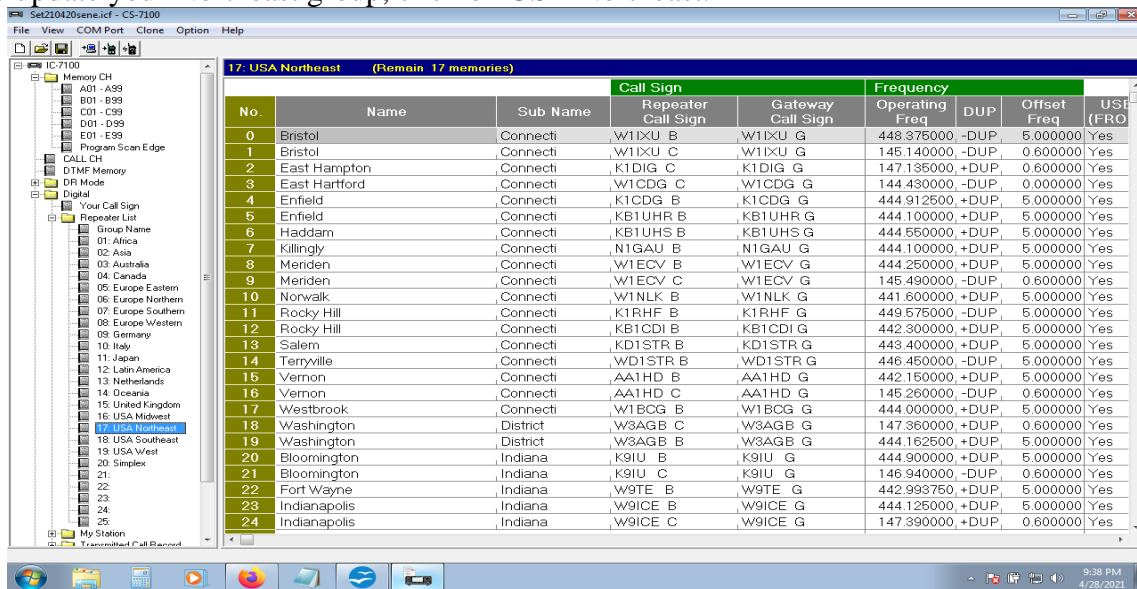


This channel named "cq"

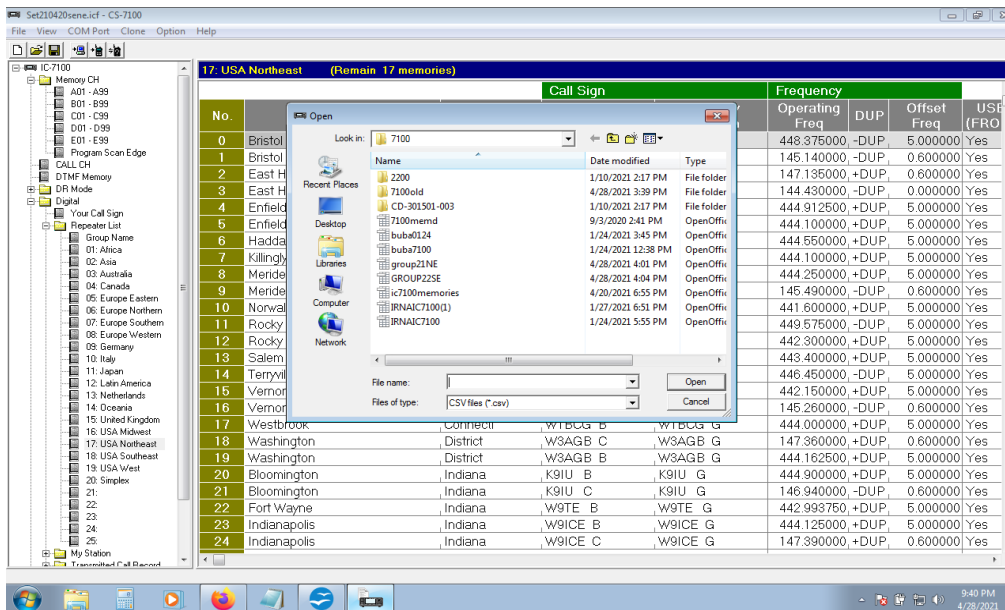


Same contents, no name

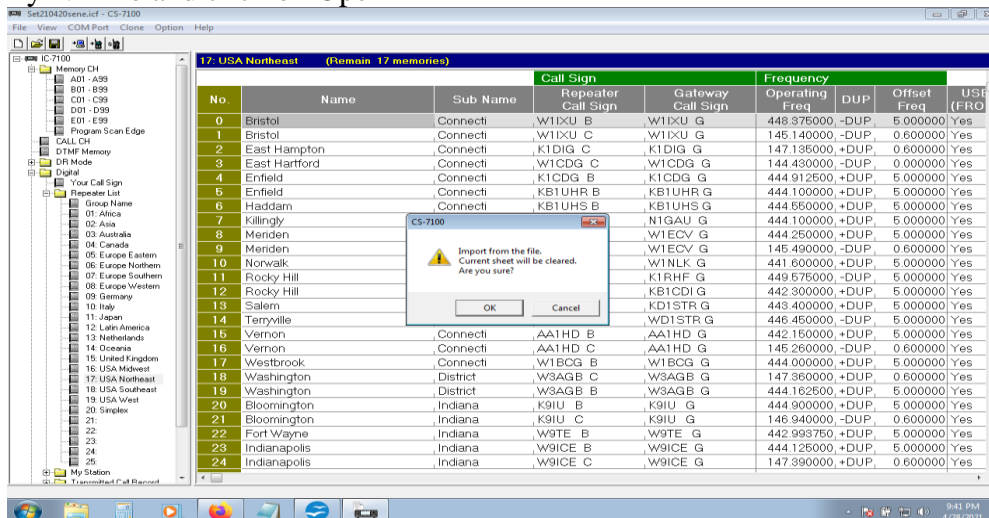
Now to update your Northeast group, click on USA Northeast.



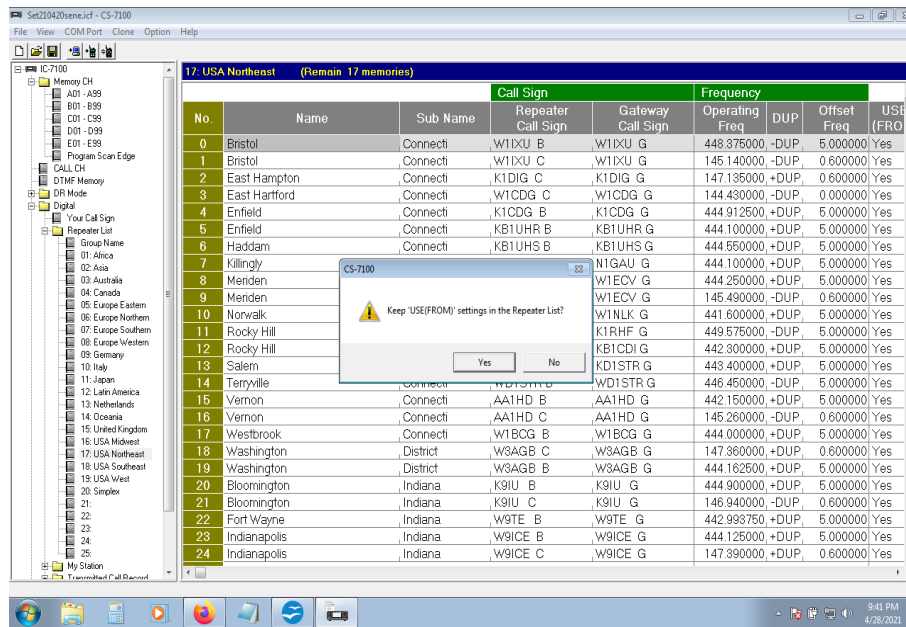
now click on File, Import, Group



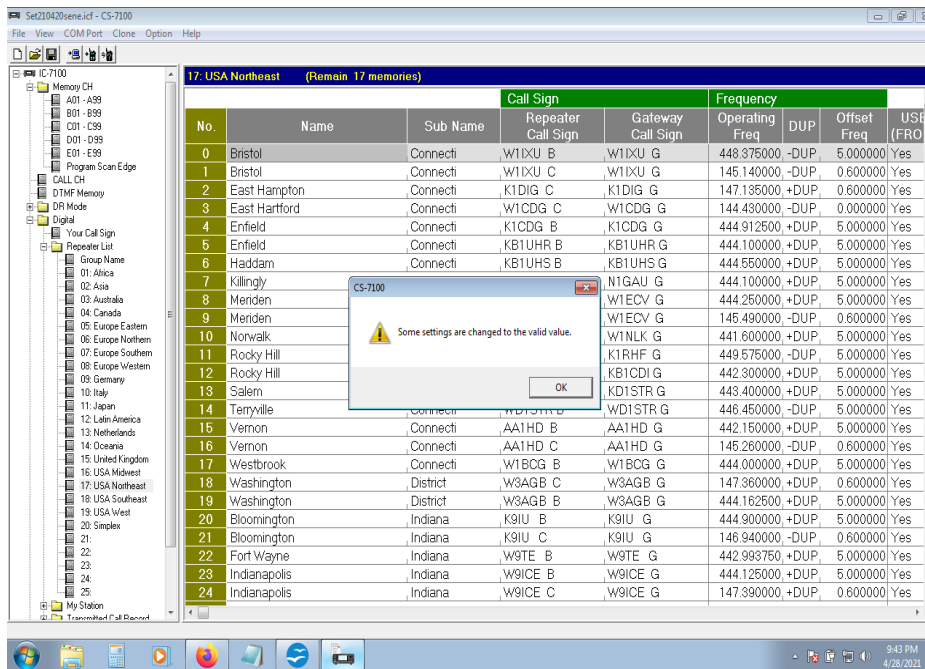
here I select my NE file and click on Open



get this message
click OK
get this message



click YES



get this message:

click OK
get this :

No.	Name	Sub Name	Call Sign	Repeater Call Sign	Gateway Call Sign	Frequency	DUP	Offset	USI
0	Bristol	Connect	W1DXU B	W1DXU G		449.375000	-DUP	5.000000	Yes
1	Bristol	Connect	W1DXU C	W1DXU G		146.140000	-DUP	0.600000	Yes
2	East Hampton	Connect	K1DIG C	K1DIG G		147.135000	+DUP	0.600000	Yes
3	East Hartford	Connect	W1CDG C	W1CDG G		144.430000	-DUP	0.000000	Yes
4	Enfield	Connect	K1CDG B	K1CDG G		444.012500	+DUP	5.000000	Yes
5	Enfield	Connect	KB1UHR B	KB1UHR G		444.100000	+DUP	5.000000	Yes
6	Haddam	Connect	KB1UHS B	KB1UHS G		444.550000	+DUP	5.000000	Yes
7	Killingly	Connect	N1GAU B	N1GAU G		444.100000	+DUP	5.000000	Yes
8	Meriden	Connect	W1ECV B	W1ECV G		444.250000	+DUP	5.000000	Yes
9	Meriden	Connect	W1ECV C	W1ECV G		146.490000	-DUP	0.600000	Yes
10	Norwalk	Connect	W1NLK B	W1NLK G		441.600000	+DUP	5.000000	Yes
11	Rocky Hill	Connect	K1RHF B	K1RHF G		449.575000	-DUP	5.000000	Yes
12	Rocky Hill	Connect	KB1CDI B	KB1CDI G		442.300000	+DUP	5.000000	Yes
13	Salem	Connect	KD1STR B	KD1STR G		443.400000	+DUP	5.000000	Yes
14	Terryville	Connect	WD1STR B	WD1STR G		446.450000	-DUP	5.000000	Yes
15	Vernon	Connect	AA1HD B	AA1HD G		442.150000	+DUP	5.000000	Yes
16	Vernon	Connect	AA1HD C	AA1HD G		146.260000	-DUP	0.600000	Yes
17	Westbrook	Connect	W1BCG B	W1BCG G		444.000000	+DUP	5.000000	Yes
18	Washington	District	W3AGB C	W3AGB G		147.360000	+DUP	0.600000	Yes
19	Washington	District	W3AGB B	W3AGB G		444.162500	+DUP	5.000000	Yes
20	Bloomington	Indiana	K9IU B	K9IU G		444.900000	+DUP	5.000000	Yes
21	Bloomington	Indiana	K9IU C	K9IU G		146.940000	-DUP	0.600000	Yes
22	Fort Wayne	Indiana	W9TE B	W9TE G		442.993750	+DUP	5.000000	Yes
23	Indianapolis	Indiana	W9ICE B	W9ICE G		444.125000	+DUP	5.000000	Yes
24	Indianapolis	Indiana	W9ICE C	W9ICE G		147.390000	+DUP	0.600000	Yes

ONE Group done!
Now you can do others as needed.

One group done, now do others as needed.