

Review of the FA-VA4 Antenna Analyzer

By Bill Heybruck, W4EDN

I follow the Elecraft reflector and a while back someone asked for a recommendation on an Antenna Analyzer, Several users replied with this one:

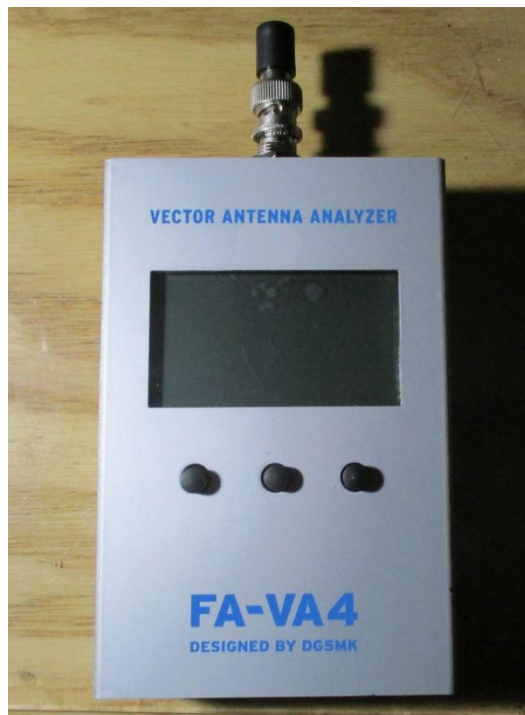
<http://www.box73.com/product/5>

so for \$140 I thought I would check it out.

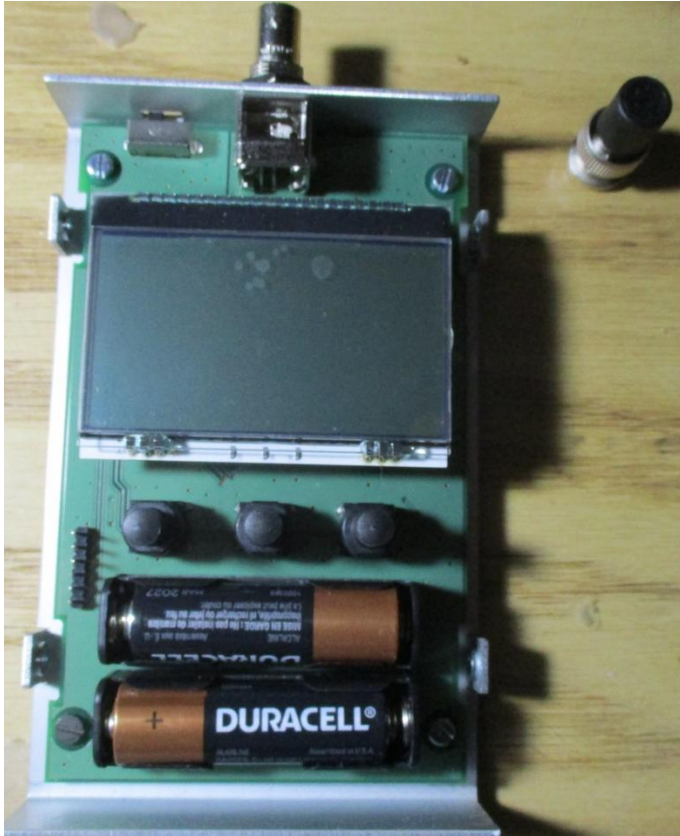
It ships from Germany so it took a few days to get here (maybe a week) but it was worth it,

Took about an hour to assemble as all the hard parts are already done.. (SMT)

Here is the finished box:



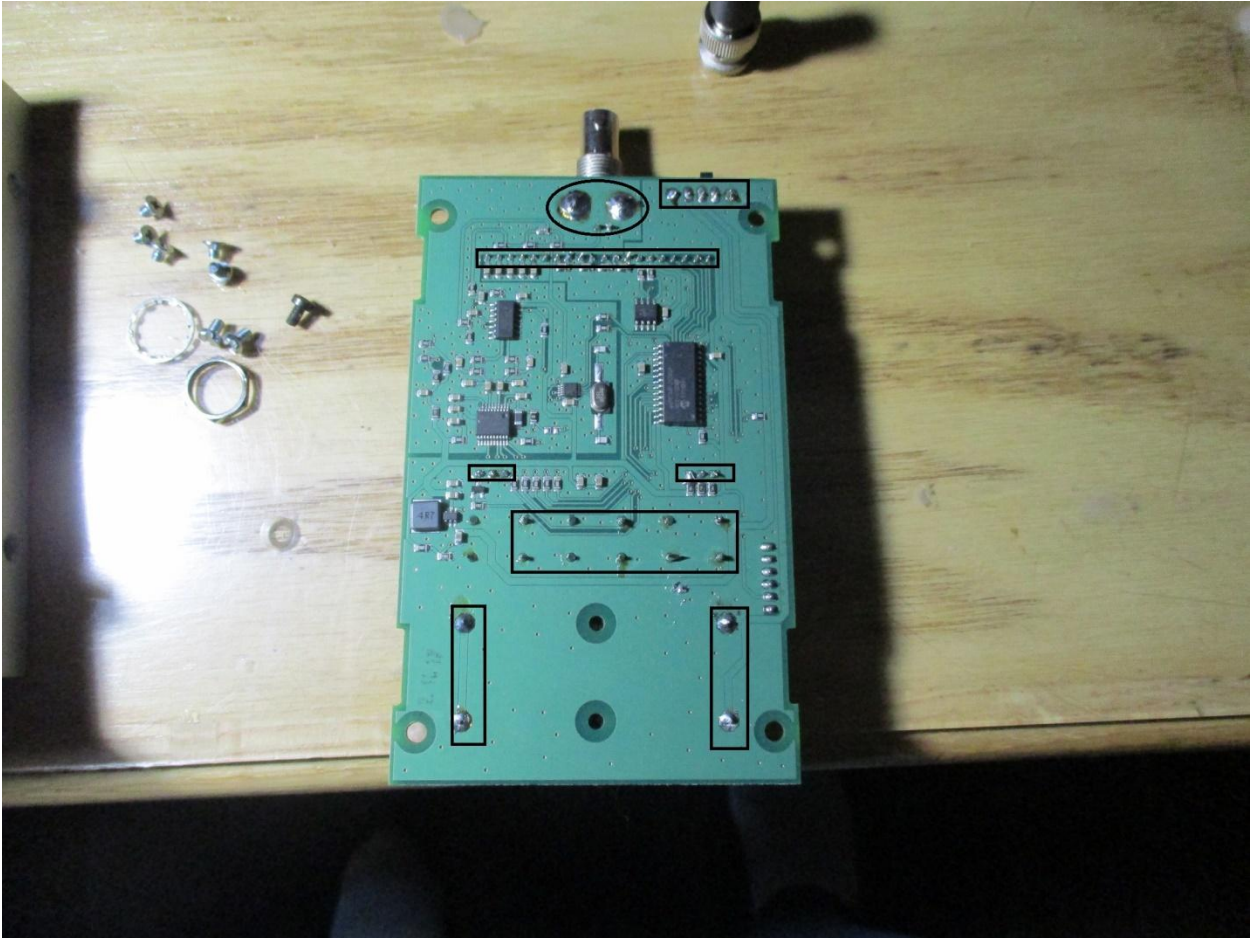
With the cover off, the terminator is included. The 50 ohm terminator is used for calibration.



If you get one, you will need on of these, a UHF to BNC adapter



Bottom view:



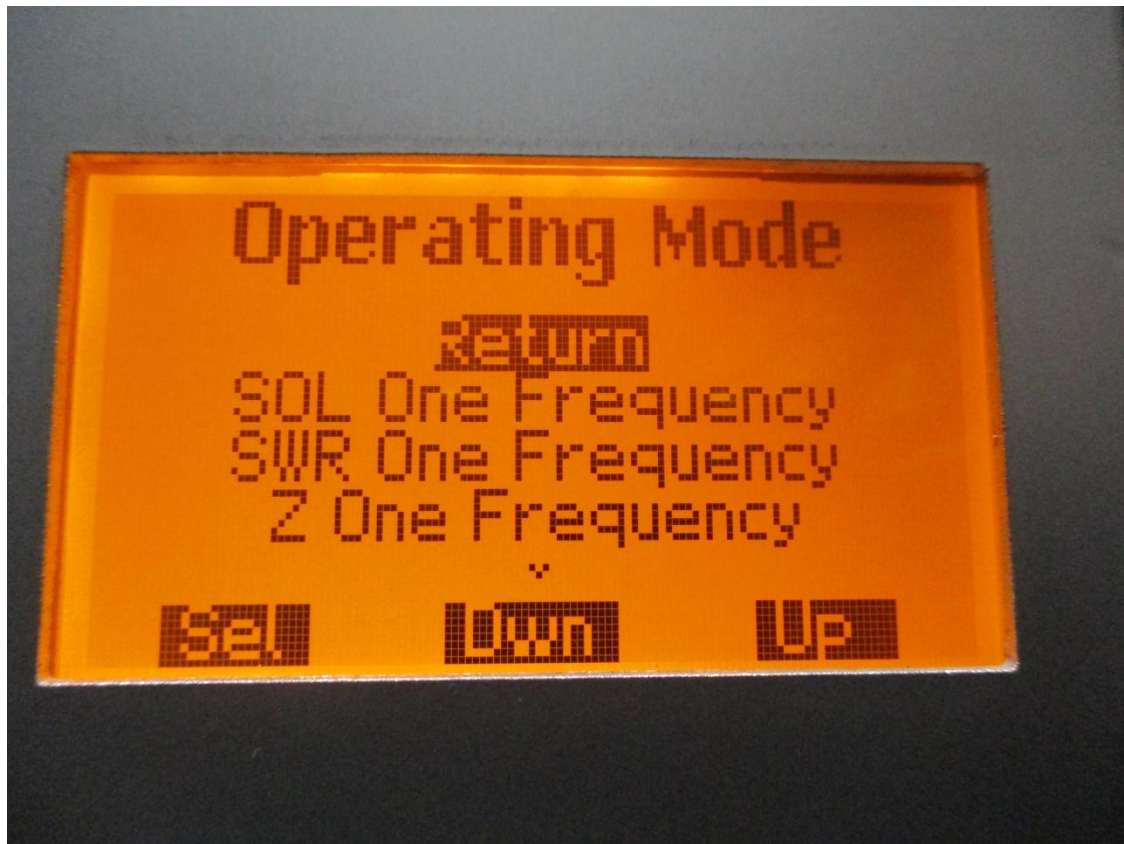
The areas in black are parts you install, LCD connectors, battery holders, push button switches and on-off switch. You'll need a hot iron for the BNC connector.

I have a 40 W Weller and a 60 W pencil(the blue one) I got on Amazon for \$9.that works good on the bigger stuff.:

GLE2016 Adjustable Temperature



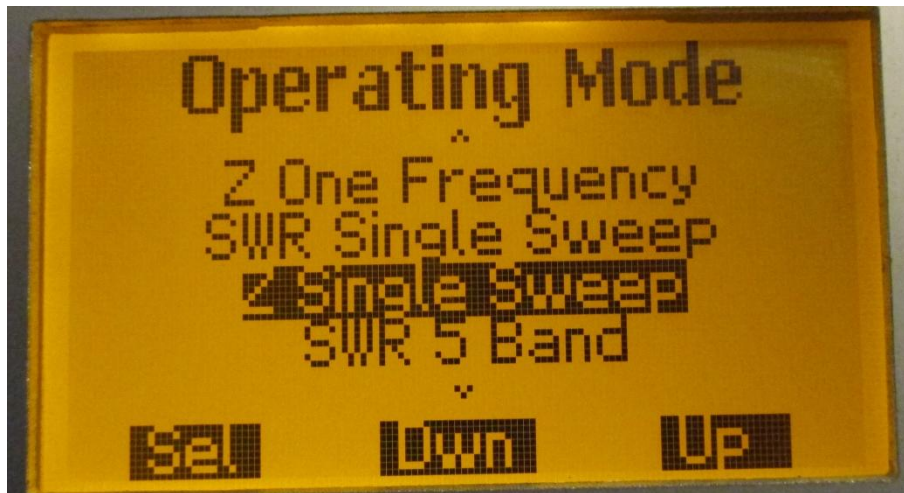
Turn it on, and here is the main menu (or press and hold the leftmost button).



As shown, the left button is to select, middle for Down and right for Up.

SOL=Short Open, Load , used to calibrate the analyzer.

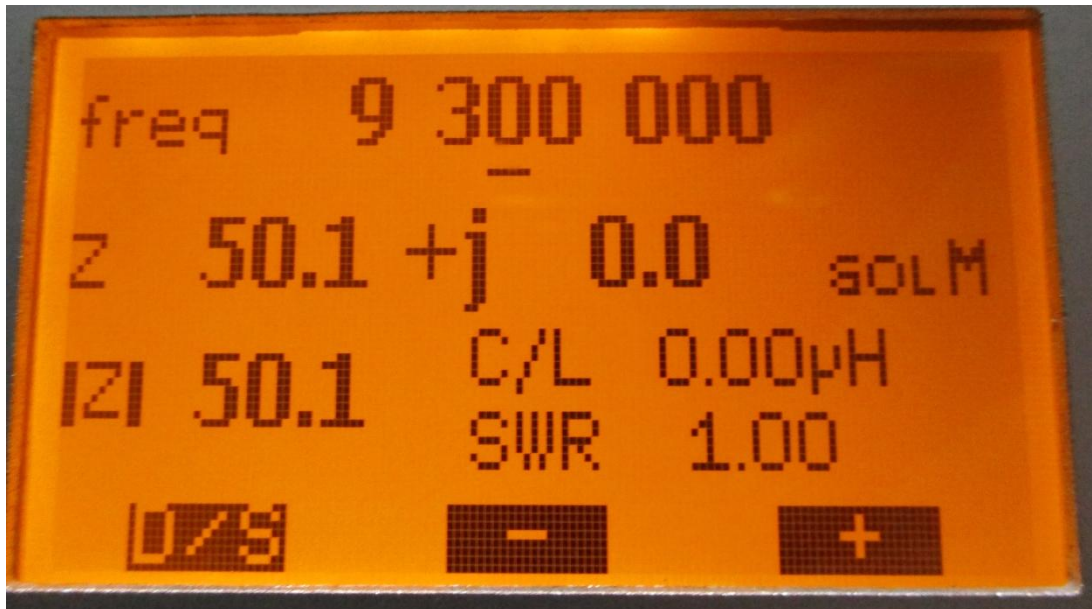
Menu page 2



Menu page 3:

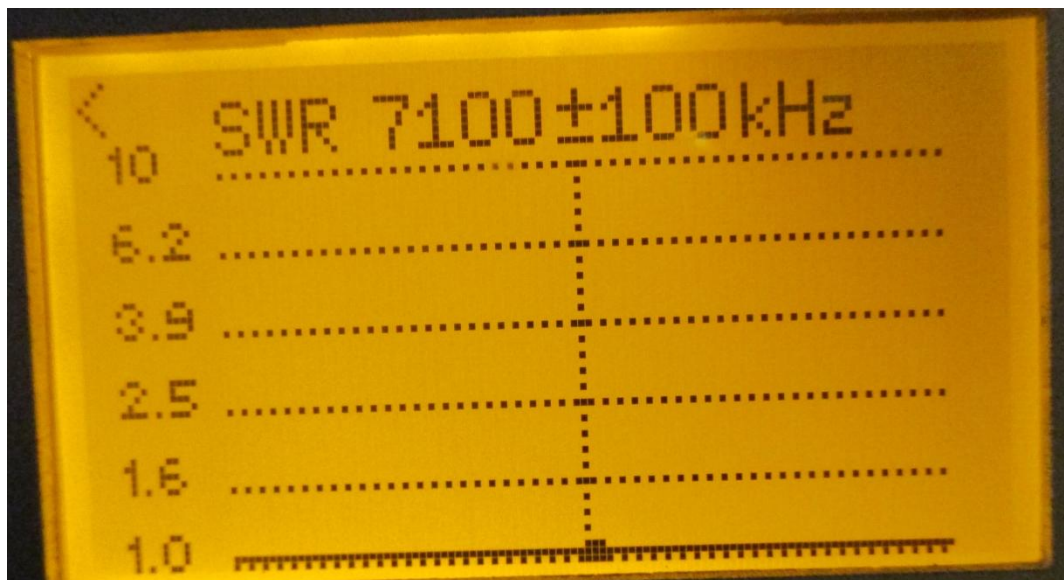


Z one frequency:



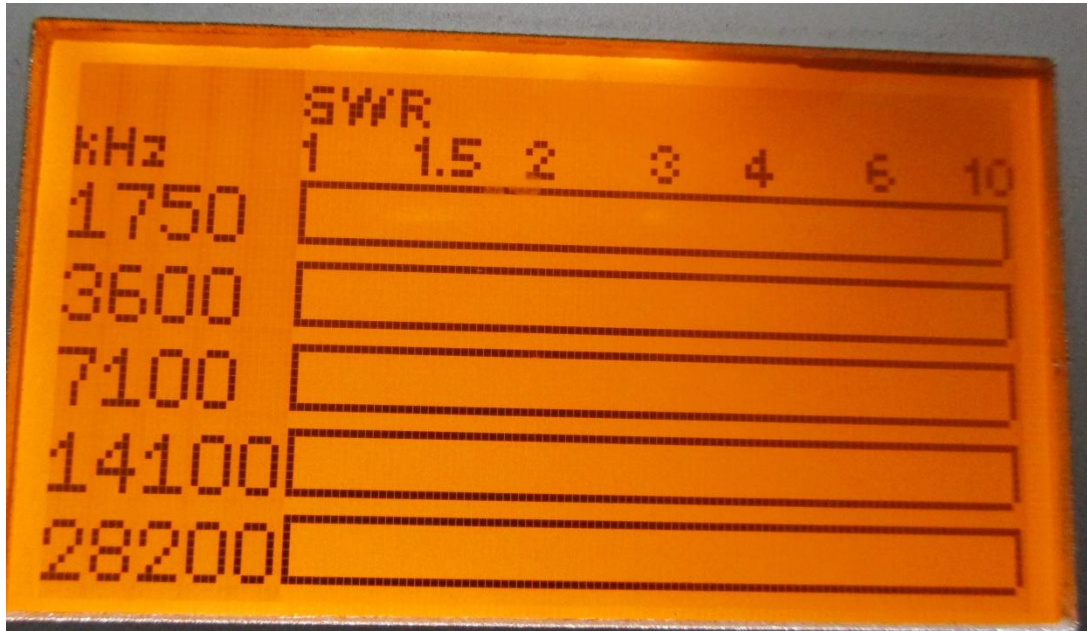
Use buttons to change frequency.

SWR Single sweep:



Use buttons to change center frequency .

5 band SWR:

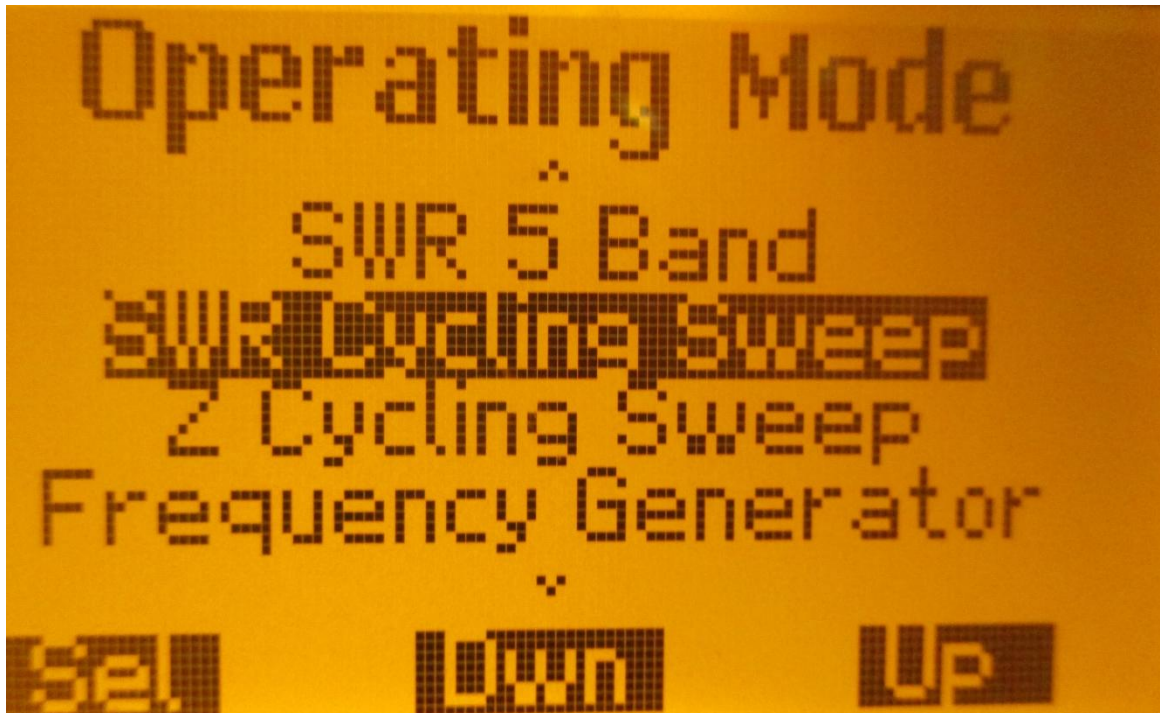


The image shows a yellow LCD screen with a grid for setting SWR values at five different frequencies. The columns are labeled 'kHz' and 'SWR' with values 1, 1.5, 2, 3, 4, 6, and 10. The rows correspond to frequencies of 1750, 3600, 7100, 14100, and 28200 kHz. Each cell in the grid is currently empty.

kHz	SWR	1	1.5	2	3	4	6	10
1750								
3600								
7100								
14100								
28200								

Set frequencies in SETUP.

Menu page 2-3



SWR cycling sweep is same as single sweep except it keeps scanning, vs a single sweep and hold.

K4Kay and I used it with his new 40m Vertical and it worked well. The only drawback is that it only goes to 100 MHz so it will not cover 2M or 440.

If you are in need of an Analyzer for HF, I recommend it, especially for only \$140 and an hour of time.

Bill

Here are a couple of pictures on a real antenna.



VECTOR ANTENNA ANALYZER



How it came:



What's in the box. Great instructions.





Note parts inside the aluminum enclosure.



These are what you need to install.