

Using Chirp to program a Baofeng handheld.
By Bill Heybruck W4EDN

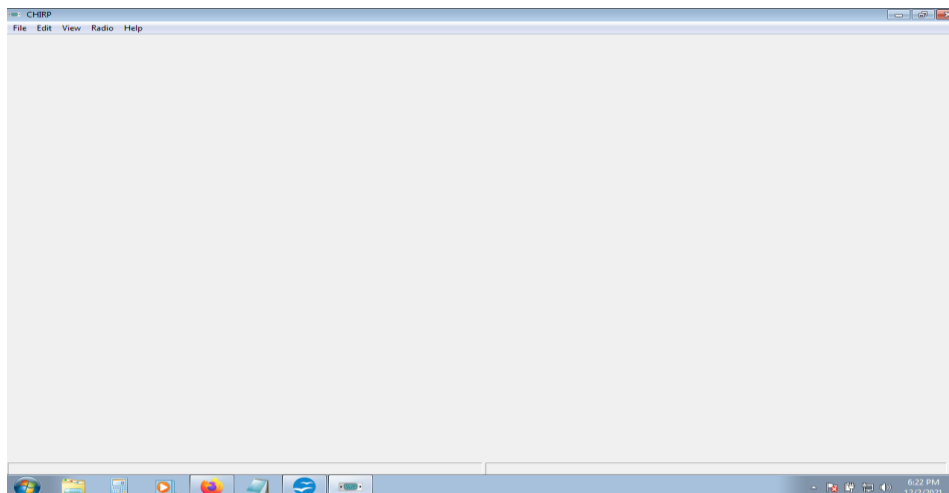
A: Download and install chirp. <http://chirp.danplanet.com>

B: Gather your radio and programming cable:

Here is a picture of mine:

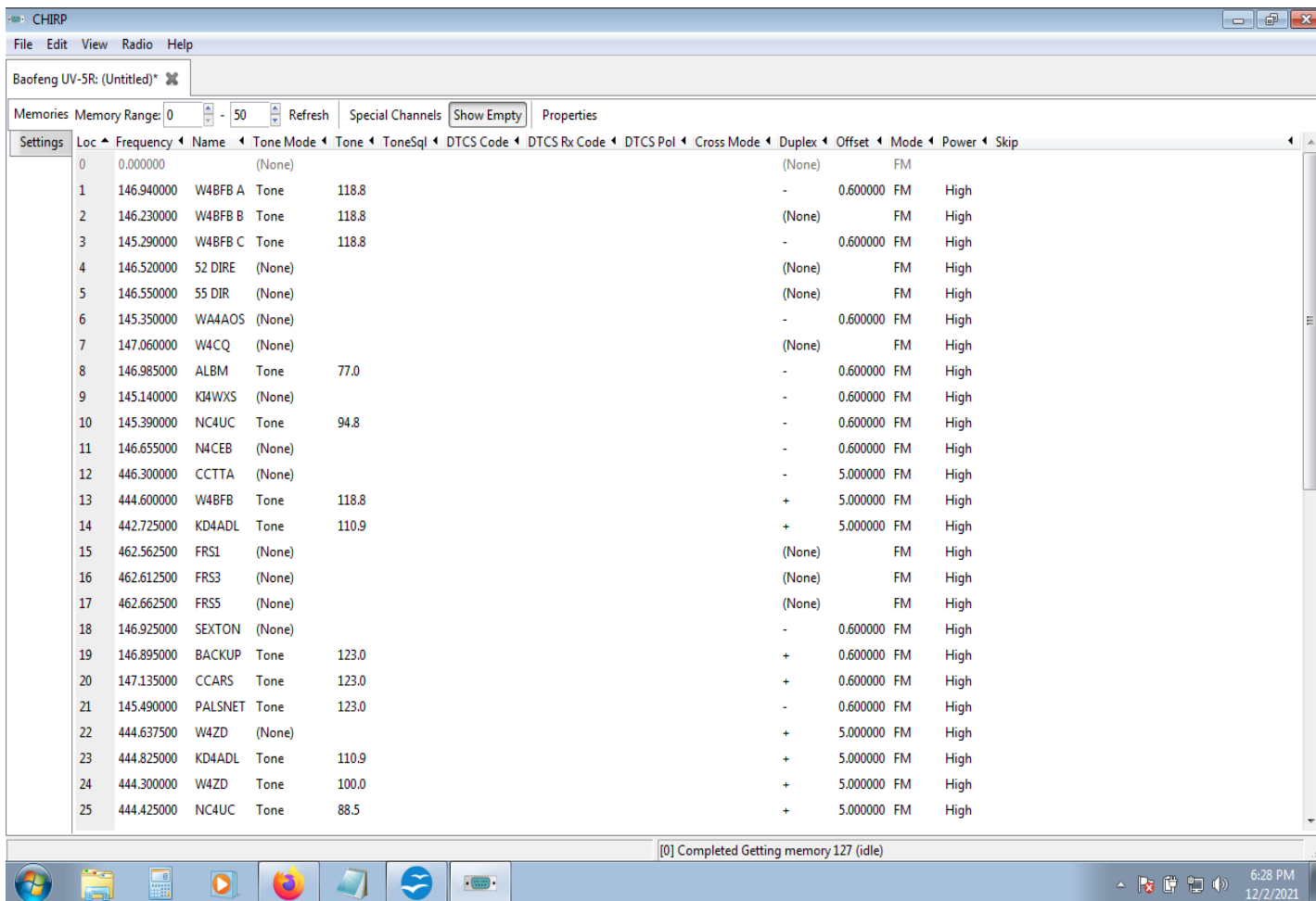


C: Open chirp

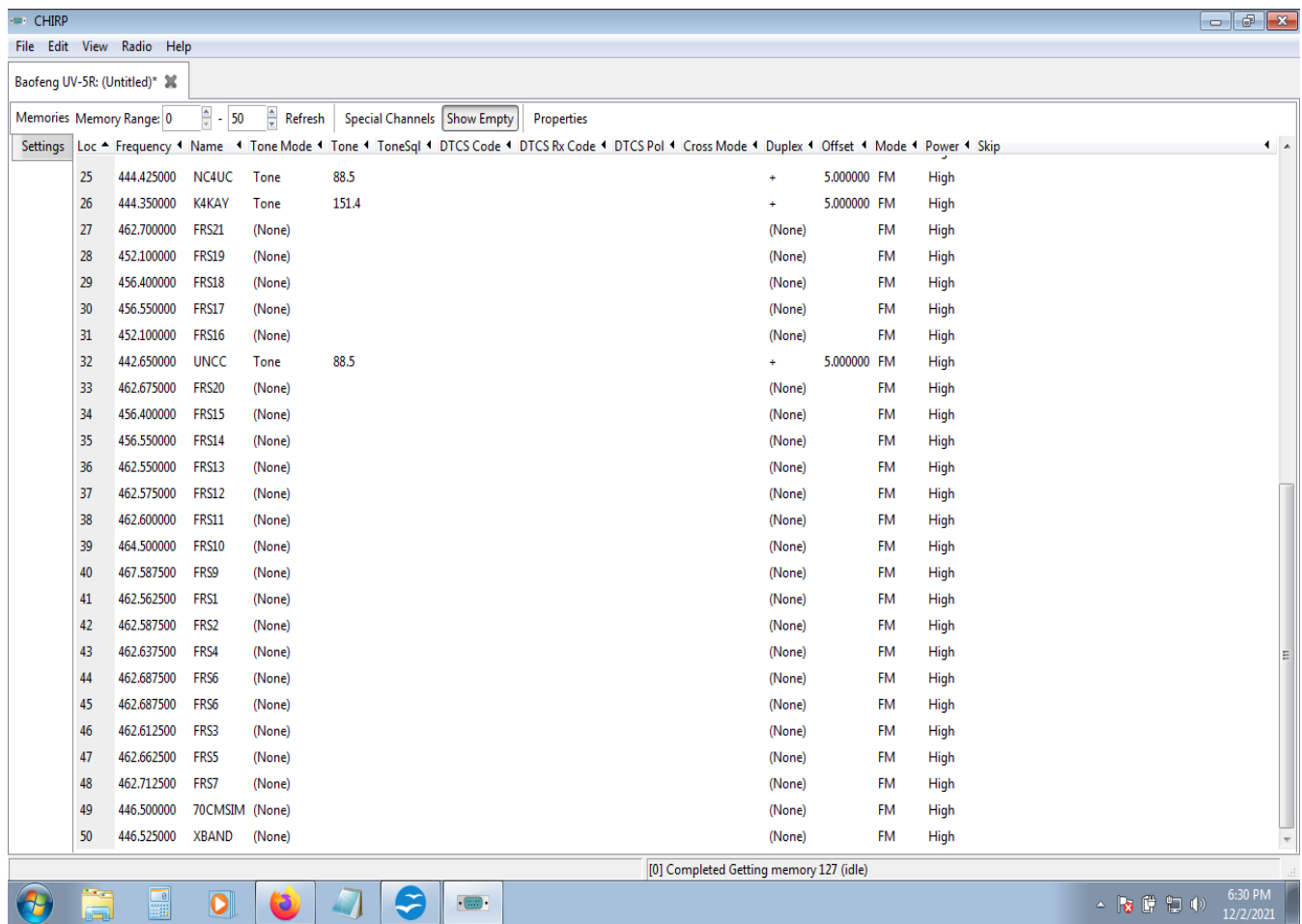


D: Plug in your radio to Computer, now in chirp click on Radio, Download From Radio, select the highest number Com port usually at the bottom, TURN RADIO ON, and click OK.

Here is what I have in mine: I have 50 channels set up, here is first 25:



Here is 2nd 25



E: now you can Edit them as you see fit. Remember only this way can you set NAMES to channels.

Here I edited #50 for JAARS. Setting the Frequency, tone, offset and Name and power (high).

CHIRP

File Edit View Radio Help

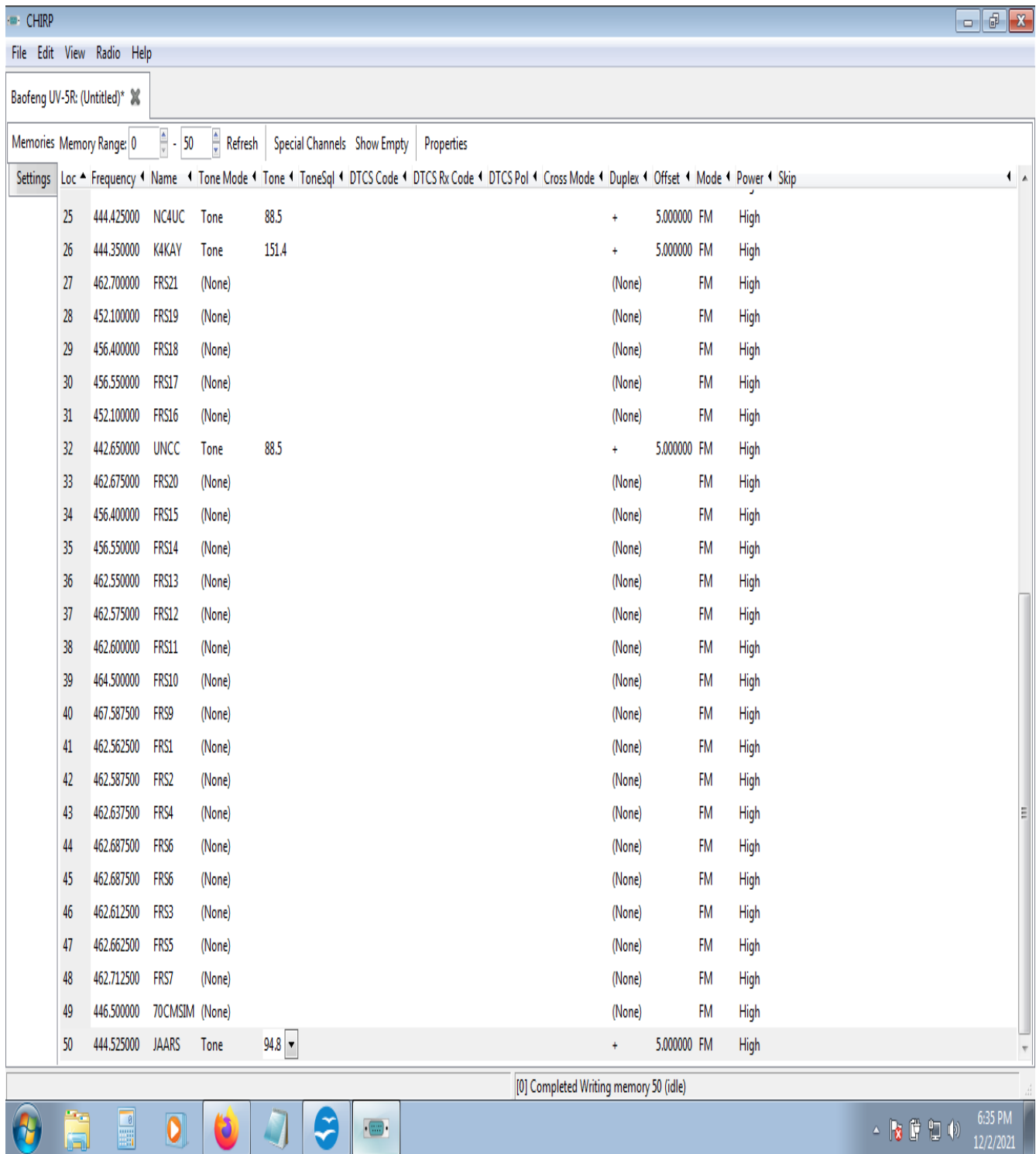
Baofeng UV-SR: (Untitled)*

Memories Memory Range: 0 - 50 Refresh Special Channels Show Empty Properties

Settings	Loc	Frequency	Name	Tone Mode	Tone	ToneSql	DTCS Code	DTCS Rx Code	DTCS Pol	Cross Mode	Duplex	Offset	Mode	Power	Skip
	25	444.425000	NC4UC	Tone	88.5						+	5.000000	FM	High	
	26	444.350000	K4KAY	Tone	151.4						+	5.000000	FM	High	
	27	462.700000	FRS21	(None)							(None)		FM	High	
	28	452.100000	FRS19	(None)							(None)		FM	High	
	29	456.400000	FRS18	(None)							(None)		FM	High	
	30	456.550000	FRS17	(None)							(None)		FM	High	
	31	452.100000	FRS16	(None)							(None)		FM	High	
	32	442.650000	UNCC	Tone	88.5						+	5.000000	FM	High	
	33	462.675000	FRS20	(None)							(None)		FM	High	
	34	456.400000	FRS15	(None)							(None)		FM	High	
	35	456.550000	FRS14	(None)							(None)		FM	High	
	36	462.550000	FRS13	(None)							(None)		FM	High	
	37	462.575000	FRS12	(None)							(None)		FM	High	
	38	462.600000	FRS11	(None)							(None)		FM	High	
	39	464.500000	FRS10	(None)							(None)		FM	High	
	40	467.587500	FRS9	(None)							(None)		FM	High	
	41	462.562500	FRS1	(None)							(None)		FM	High	
	42	462.587500	FRS2	(None)							(None)		FM	High	
	43	462.637500	FRS4	(None)							(None)		FM	High	
	44	462.687500	FRS6	(None)							(None)		FM	High	
	45	462.687500	FRS6	(None)							(None)		FM	High	
	46	462.612500	FRS3	(None)							(None)		FM	High	
	47	462.662500	FRS5	(None)							(None)		FM	High	
	48	462.712500	FRS7	(None)							(None)		FM	High	
	49	446.500000	70CMSIM	(None)							(None)		FM	High	
	50	444.525000	JAARS	Tone	94.8						+	5.000000	FM	High	

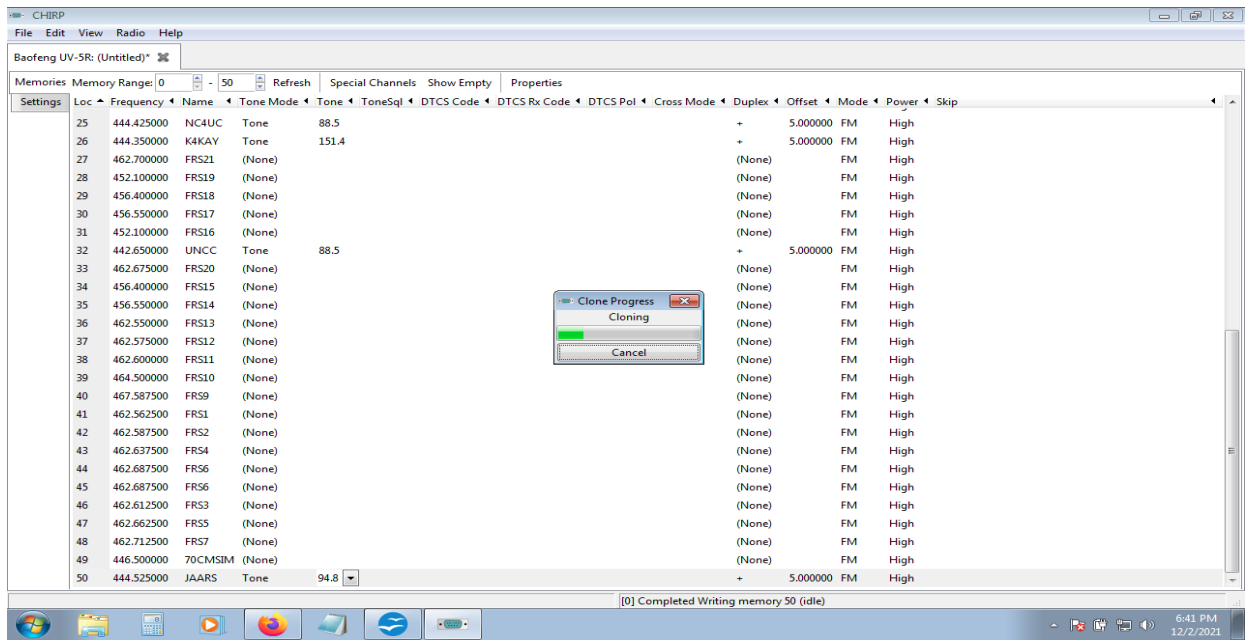
[0] Completed Writing memory 50 (idle)

6:37 PM 12/2/2021



F: now I write to radio, Click Radio, Upload to Radio,OK

you should see the cloning window as it is in process.



Your radio will restart and you are done! Save the file for future reference and you can print it as well.

Have Fun.