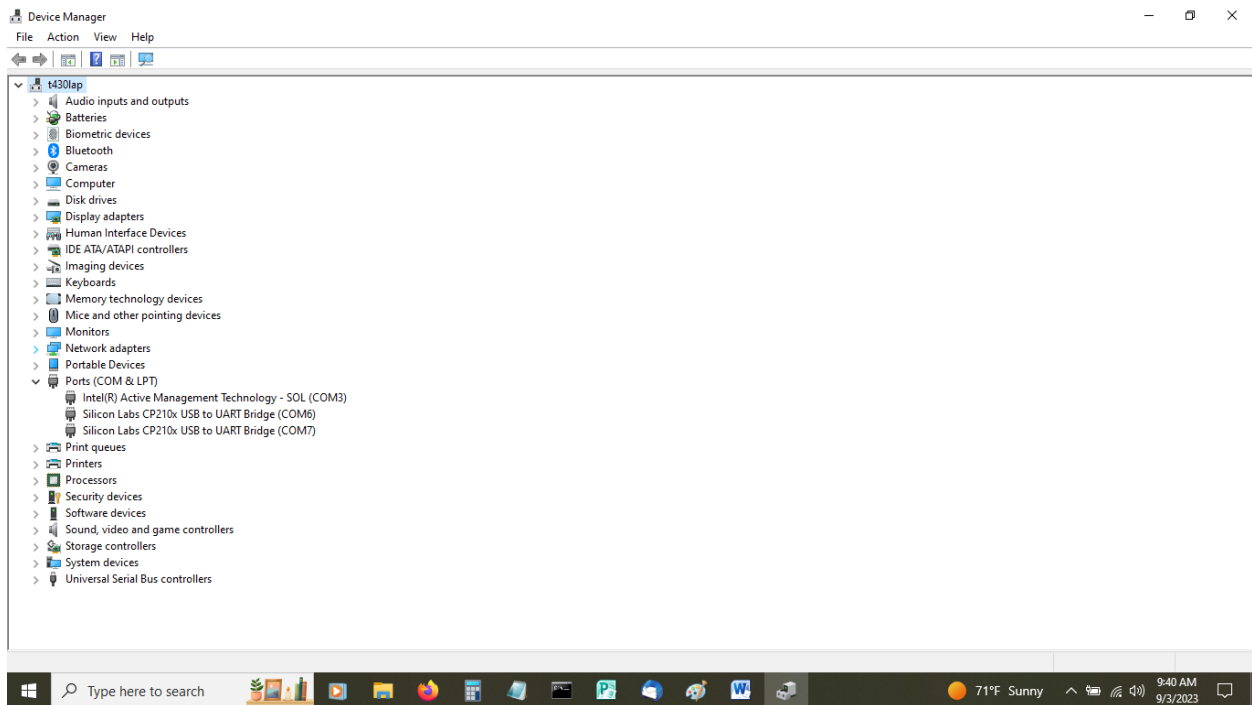


7610 SETUP FOR WINLINK/VARA on Windows PC

by Bill Heybruck. W4EDN

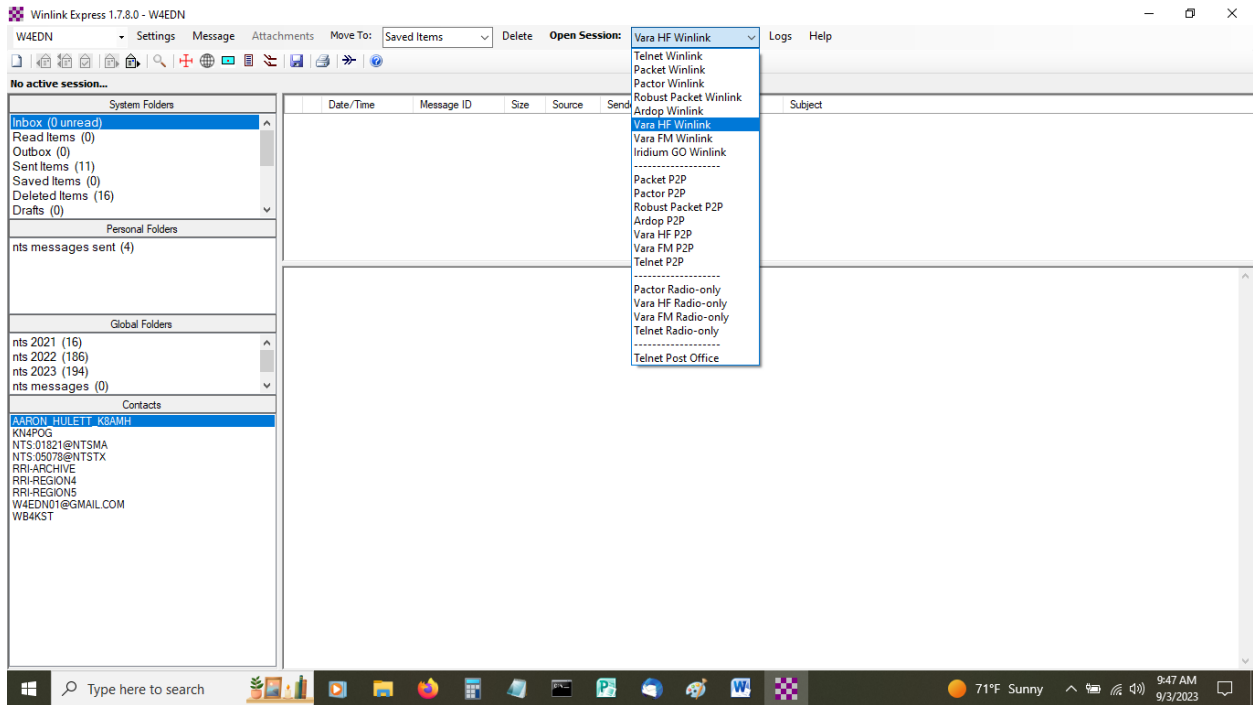
- 1: Use USB cable between 7610 and PC.
- 2: only one rig program can be used at one time.E.G. cannot run WSJT or a logging program with rig control with WINLINK.
- 3: load the ICOM driver
- 4: Turn rig on, and open Device Manager to find the com port assigned to the rig. this usually does not change!



under ports , see the 2 ports assigned to Silicon Labs CP210x my case 6 and 7, I will use 7.

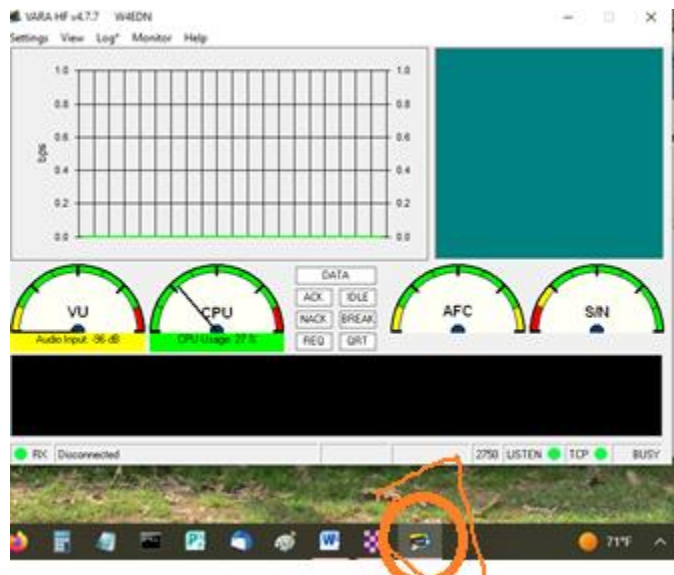
5: Open WINLINK., Go to settings and complete Winlink Express Setup.

6:In WINLINK, click on the ARROW for Open Session and select VARA HF. from the dropdown box.



7: click on Open session

there are 2 Vara windows, one is the Vara HF Winlink session, and the other is Vara HF.



8: in the Vara HF window click on settings then Sound Card,

Select the USB options for input and output.

9 in the Vara HF Winlink session, click on Settings then Radio setup:

Vara HF Winlink Settings

Radio Selection

Select Radio Model: Icom 7610 Antenna Selection: Internal 1

Icom Address: 98 USB USB Digital FM Use Internal Tuner

Codan login and optional password:

Enable ALE scanning after session completes

Radio Control Port

Serial Port to Use: COM7 Baud: 19200 Enable RTS Enable DTR TTL

PTT Port (Optional)

Serial Port to Use: Icom 7610 Baud: 9600 Enable RTS Enable DTR

Log radio control commands

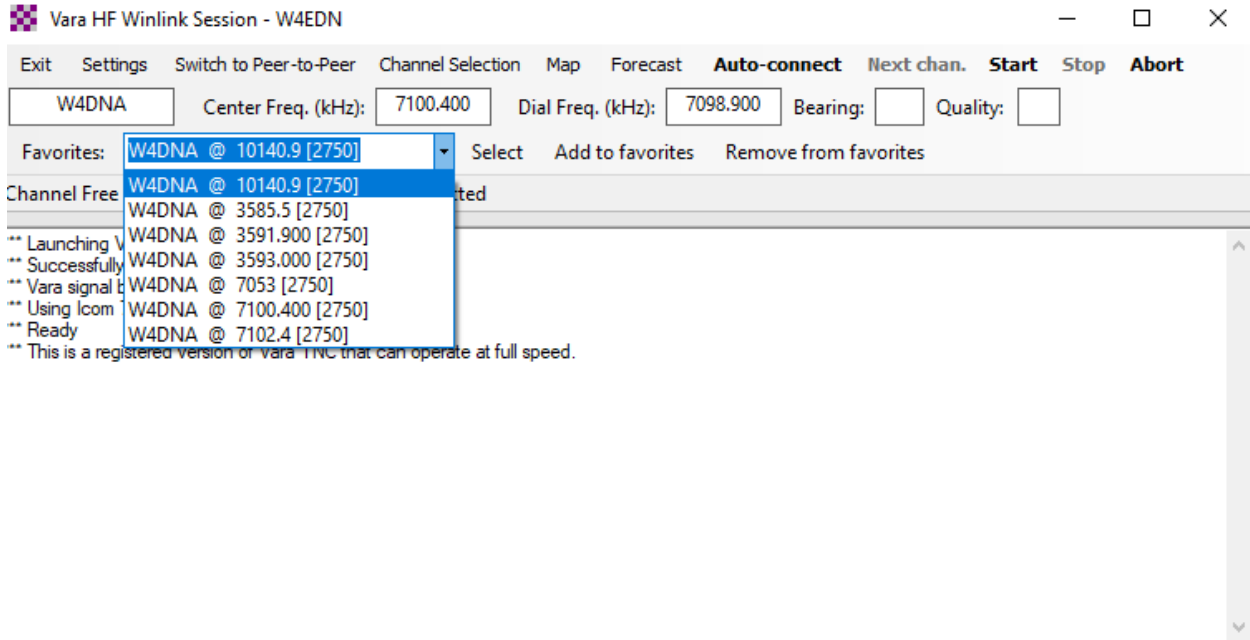
Update Cancel

select Icom 7610, USB Digital and select the Com port to match what you found in device manager, 19200 Baud, USB Digital, as shown above.

If you purchased the upgrade (one time fee) you get faster communication. I used it for a month before I upgraded and it made a big difference. i recommend it as I use it daily.

Now go back to VARA session screen and select your station and frequency. I got mine from another NTS digital ham. He gave me several fo my local MailBox W4DNA. See dropdown.

I input the data then selected Add to Favorites.



My MBox is about 160 mi from me so I use 40m during daytime and 80m after 5pm or before 9am. So you can see I last used 40m.

Now click Start and you should see your rig transmit like shown below. It does 15 attempts before declaring a failed attempt. I have to try several times once in a while as it may be busy from another op. Good luck.

